

SCANNER

Lessons from the Field: SCANNER

Michele Day, PhD

Program Manager

University of California, San Diego



resilient
network systems



Scalable Distributed Research Network

SCANNER = SCAlable National Network for Effectiveness Research

Principal Investigator

Lucila Ohno-Machado, MD, PhD

Project Dates

Sept. 30, 2010 – Sept. 29, 2013

Overall Goal

Develop a scalable, flexible, secure, distributed network infrastructure to enable near real-time comparative effectiveness research (CER) among multiple sites

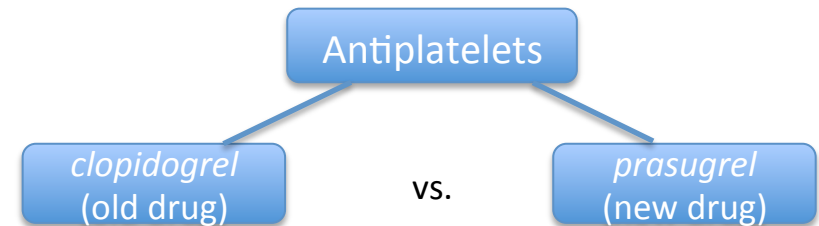
- Compare risk of bleeding from medications prescribed for cardiovascular conditions
- Sharing summary data

USE CASES

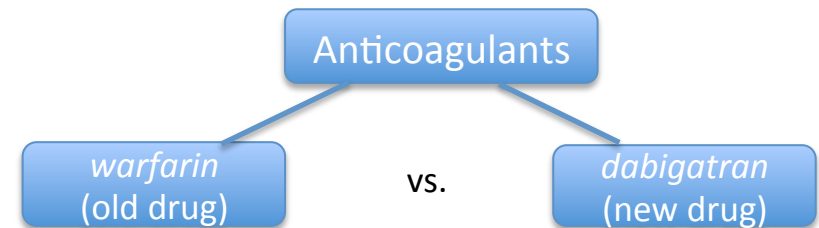
Conditions

Acute Coronary Syndrome (ACS) with Drug
Eluting Stents (DES)

Comparisons



Atrial Fibrillation (AF) or
Venous Thromboembolism (VTE)



Medication Therapy Management **SCANNER**

- Compare care management of patients with diabetes or hypertension
- Sharing limited data

USE CASES

Conditions

Comparisons

Diabetes

Physician
only

vs.

Physician
+
Pharmacist

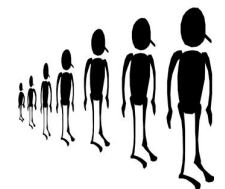
Hypertension

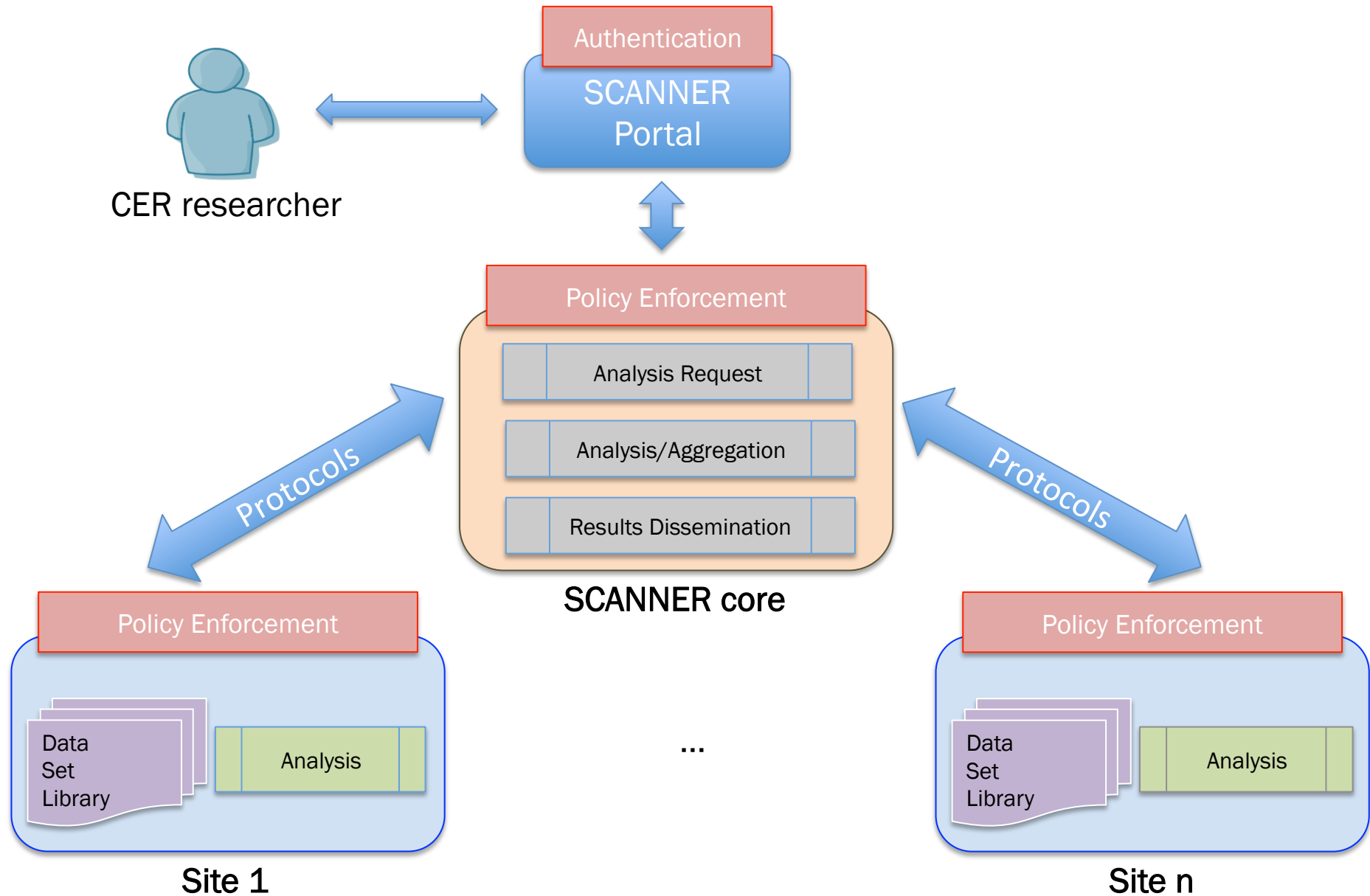
Physician
only

vs.

Physician
+
Pharmacist

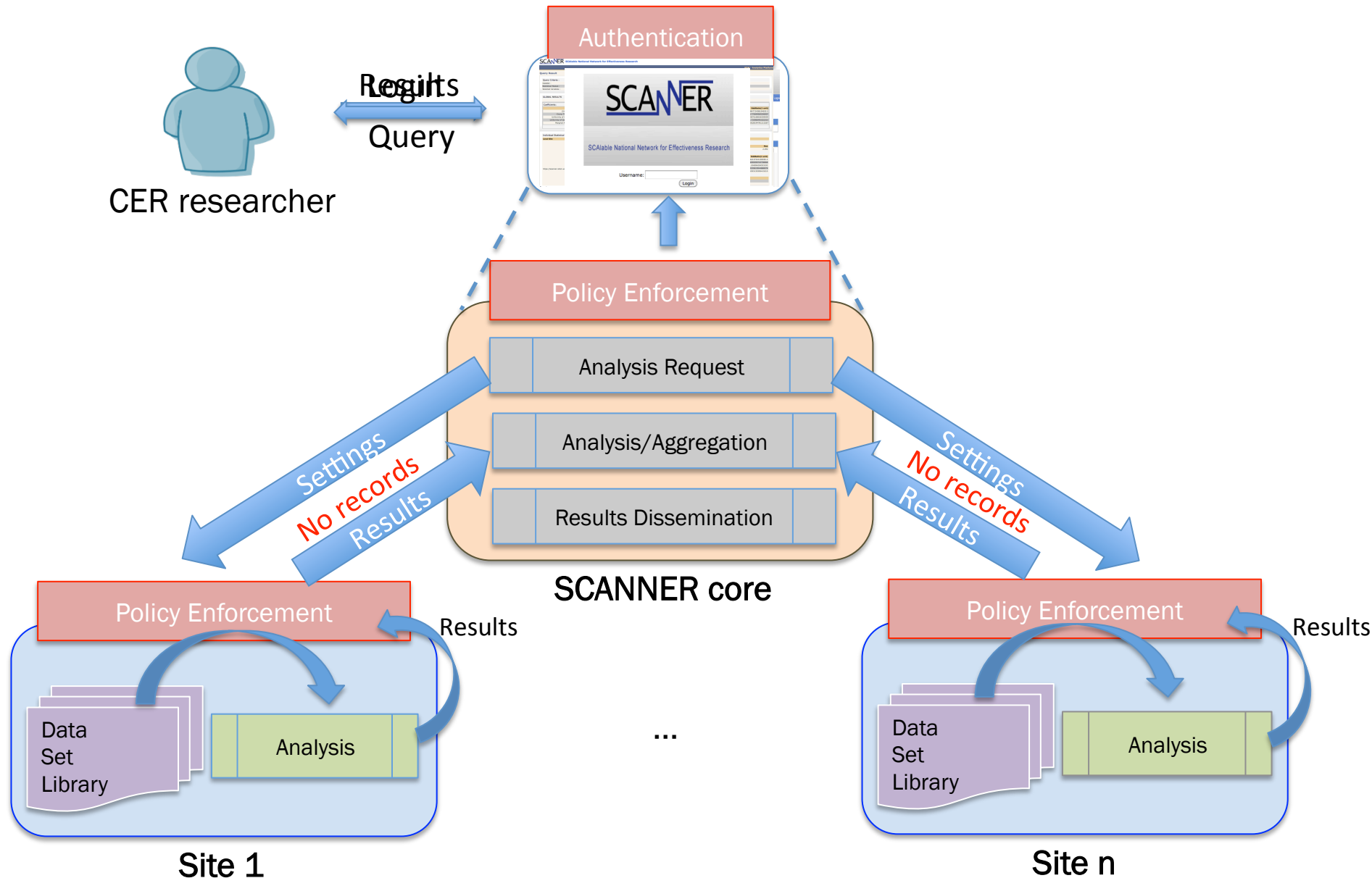
- Low-income groups
- Minority groups
 - › Hispanic/Mexican American or Latino
 - › American Indian/Alaska Native
 - › Asian
 - › Native Hawaiian or other Pacific Islander
 - › Black or African American
- Women
- Elderly
- Individuals with special health care needs
 - › Those with disabilities
 - › Those who need chronic care
 - › Those who live in inner-city areas
 - › Those who live in rural areas



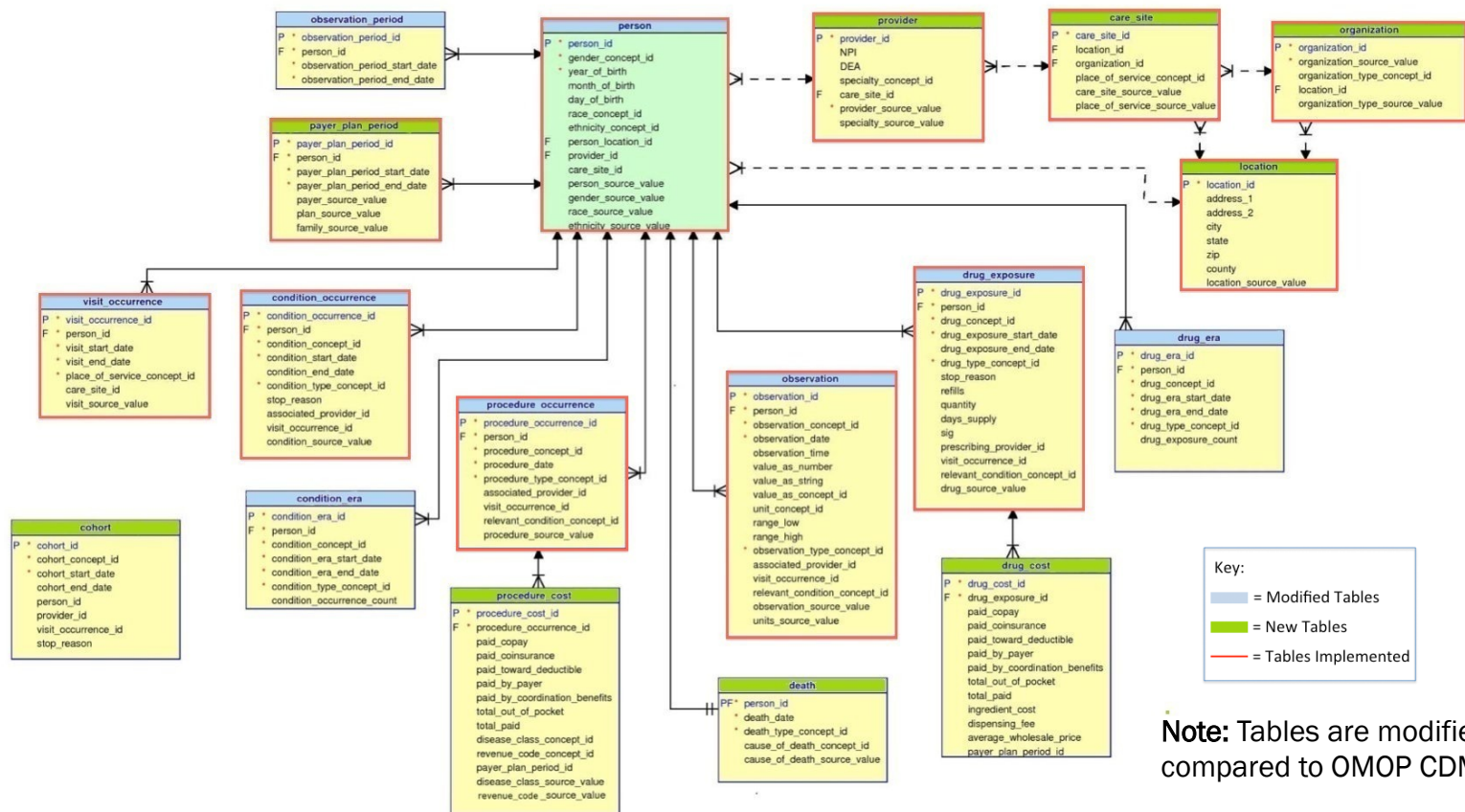


How SCANNER Works

SCANNER



- Using CDM from the Foundation for the NIH
 - **Observational Medical Outcomes Partnership (OMOP)**
- Collaborated with SAFTINet researchers and OMOP staff to recommend changes

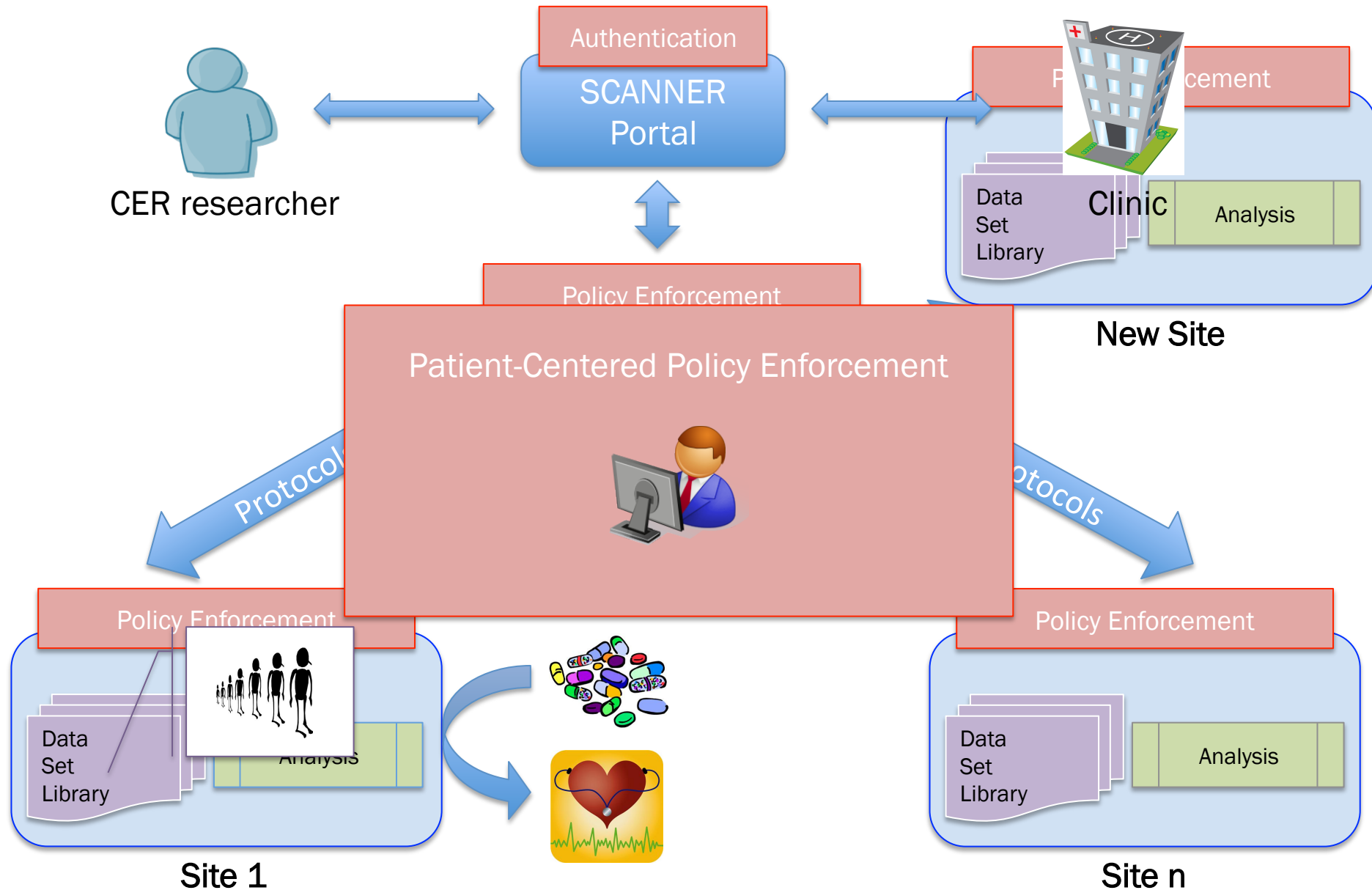


- Data Network Architecture
 - › Design for overall network is a challenge

- Data Standards and Interoperability
 - › Selection of the CDM is important
 - › Distributed sites must maintain complete consistency

- Governance
 - › Policy features must address federal, state, and institutional requirements
 - › Detailed requirements planning supports the operationalization of appropriate policies







Brigham and Women's Hospital (BWH)



Charles Drew University of Medicine and Science



RAND Corporation



Resilient Network Systems



San Francisco State University (SFSU)



Vanderbilt University Medical Center & TVHS Veterans Administration Hospital (TVHS VA)



UC Irvine



UC San Diego

<http://scanner.ucsd.edu/>

