



Identifying and Prioritizing Patient-Centered Research Questions: Orientation for Advisory Panels

Rachael Fleurence, PhD, Acting Director, PCOR Methods
April 19, 2013

Patient-Centered Outcomes Research Institute



Principles to Guide Us: Patients asked for Transparency, Efficiency, Collaboration



Transforming Patient-Centered Research:
Building Partnerships
and Promising Models

**Washington DC,
October 27-28, 2012**



Patient-Centered Outcomes Research Institute

Engaging the Wider Community

- A two-pronged approach to identify high-priority research questions
 - Investigator-initiated Approach
 - Patient- and Other Stakeholder-initiated Approach

Patient- and Other Stakeholder-Initiated Approach

PCORI receives research topics from patients and other stakeholders

Advisory Panels prioritize research topics based on explicit criteria

PCORI issues specific funding announcements for highest priority topics

Researchers and stakeholders develop responsive applications

Peer review prioritizes applications by level of alignment with criteria

Diverse research portfolio answering key questions for patients, clinicians, and healthcare leaders



Patient-Centered Outcomes Research Institute

Identifying Questions

Topic Generation

??????

??????

??????

Confirming Research Gaps

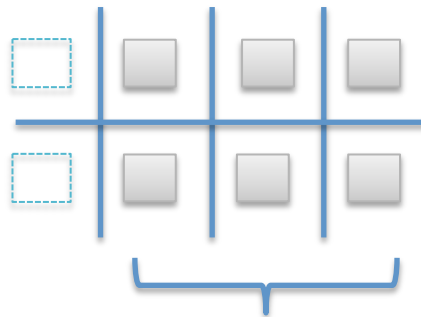
Topic Generation

Gap
Confirmation

??????

??????

??????

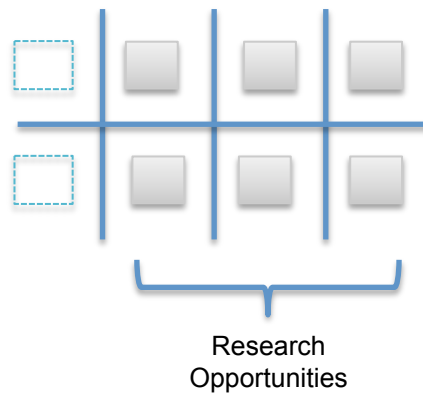


Research
Opportunities

Prioritizing Research Questions



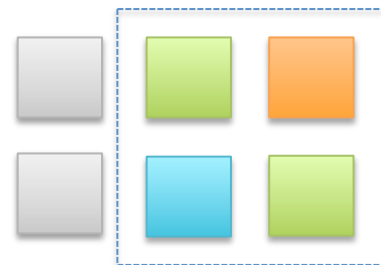
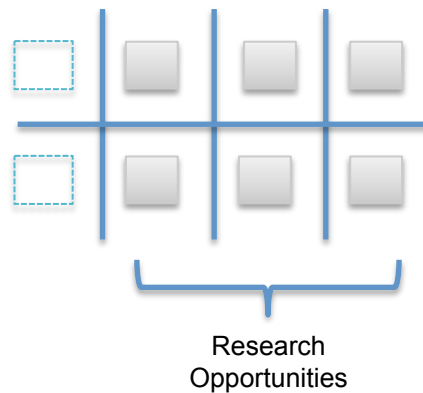
??????
??????
??????



Creating Funding Announcements

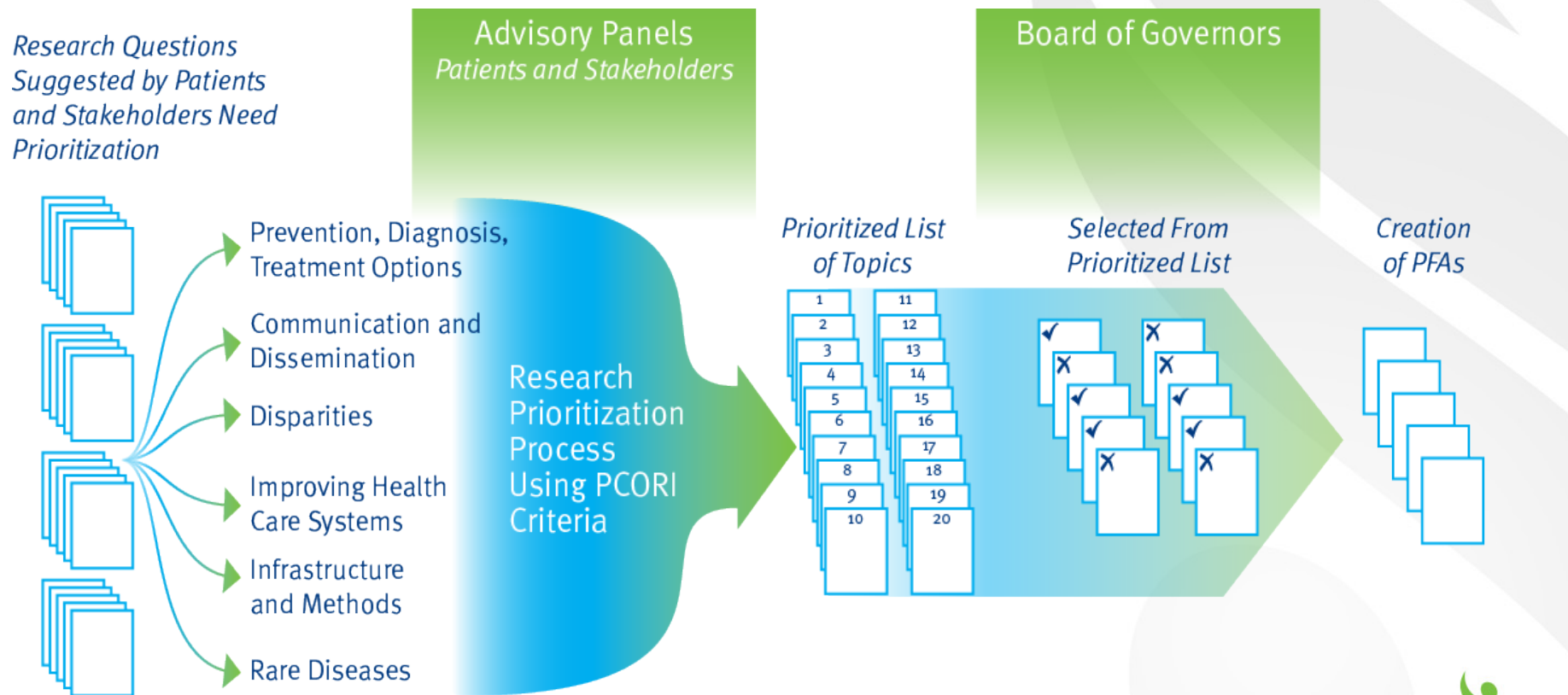


??????
??????
??????



PCORI's Research Prioritization Process

From Research Questions to Research Studies

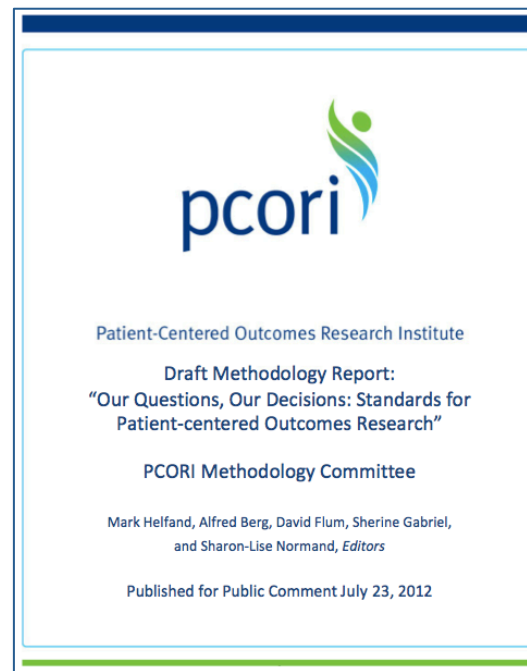


PCORI is Building on the Existing Evidence Base and Prior Experience

Existing Scientific Work and Literature



Methodology Committee and Methodology Report



Experience of Other Agencies



Federal Coordinating Council for Comparative Effectiveness Research



PCORI Criteria for Ranking Research Topics

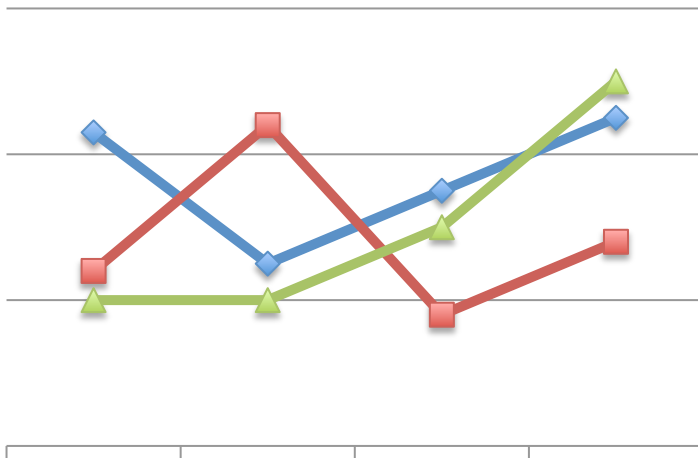


1. Patient-Centeredness



- Are **patients and clinicians** asking for this research ?
- Will research findings make a **difference** to patients and their clinicians when making healthcare decisions ?

2. Impact



- **Burden of disease** in terms of prevalence, mortality, morbidity, individual suffering, loss of productivity?
- **Rare disease?**

3. Options for Addressing the Issue



- What is known about the **relative benefits and harms** of the available management options?
- What could new research contribute?
- Have **recent innovations** (eg, a new technology or a new policy) made research on this topic especially compelling?

4. Likelihood of Implementation in Practice



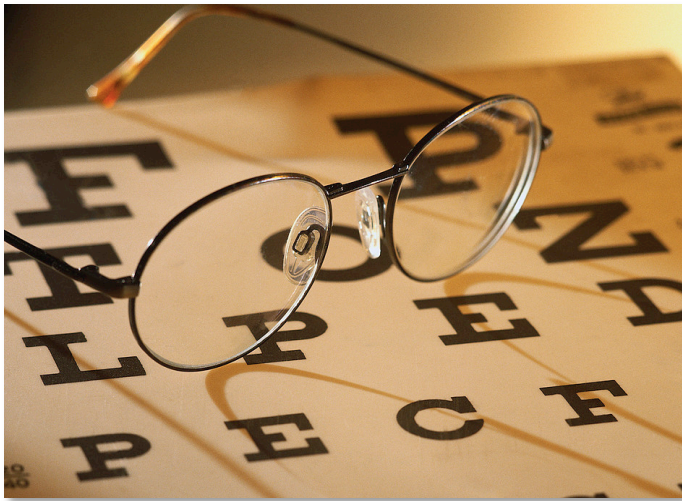
- How likely is it that the research findings will be **implemented** in practice?

5. Duration of Information



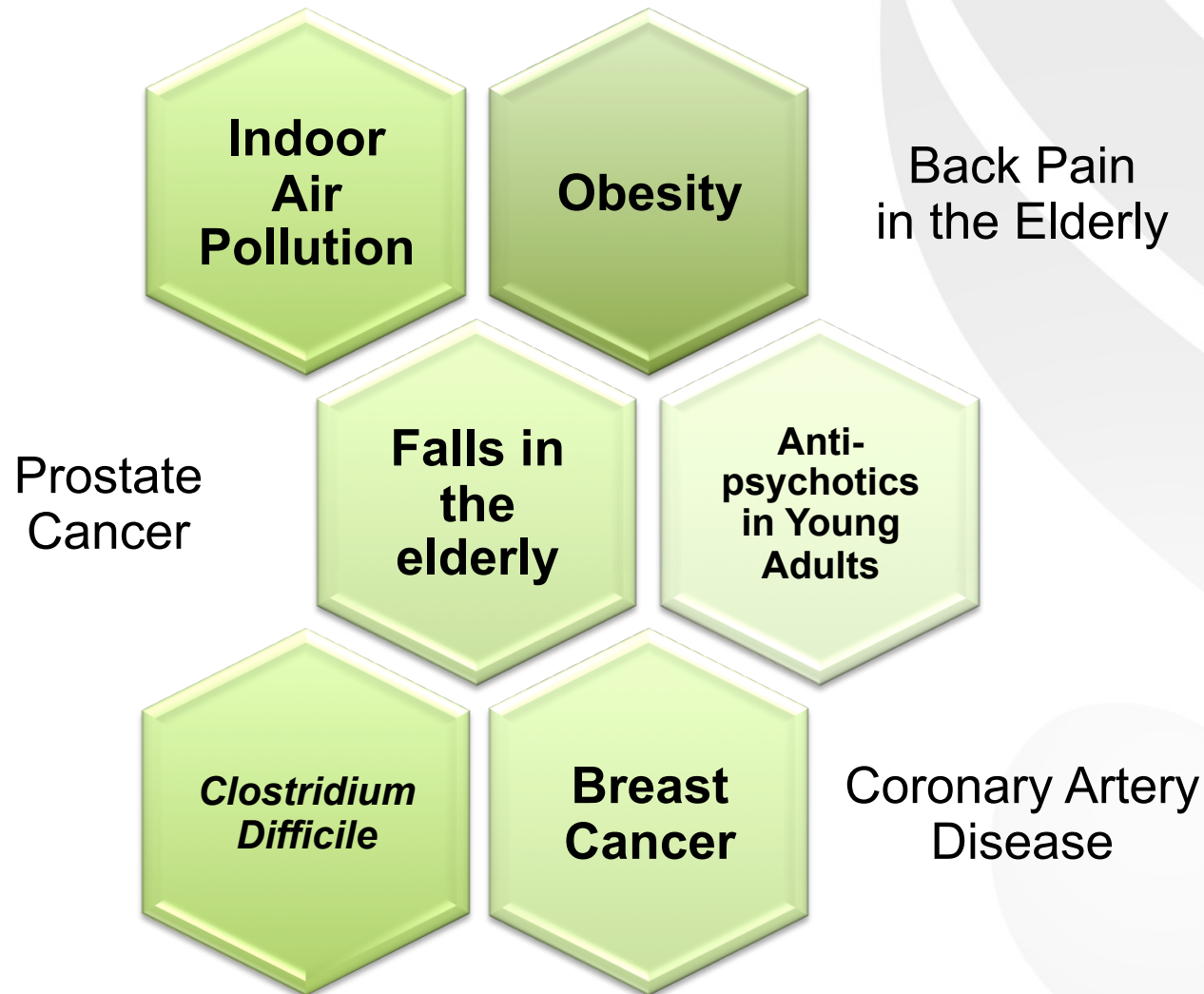
- Will research findings be valid by the time the study has concluded?

Piloting the Process



- Piloted from August to November 2012
- 35 Pilot participants
- 8 criteria to prioritize 10 topics
- Results
- Feedback

Questions to Pilot from a Diverse Range of Disease Areas



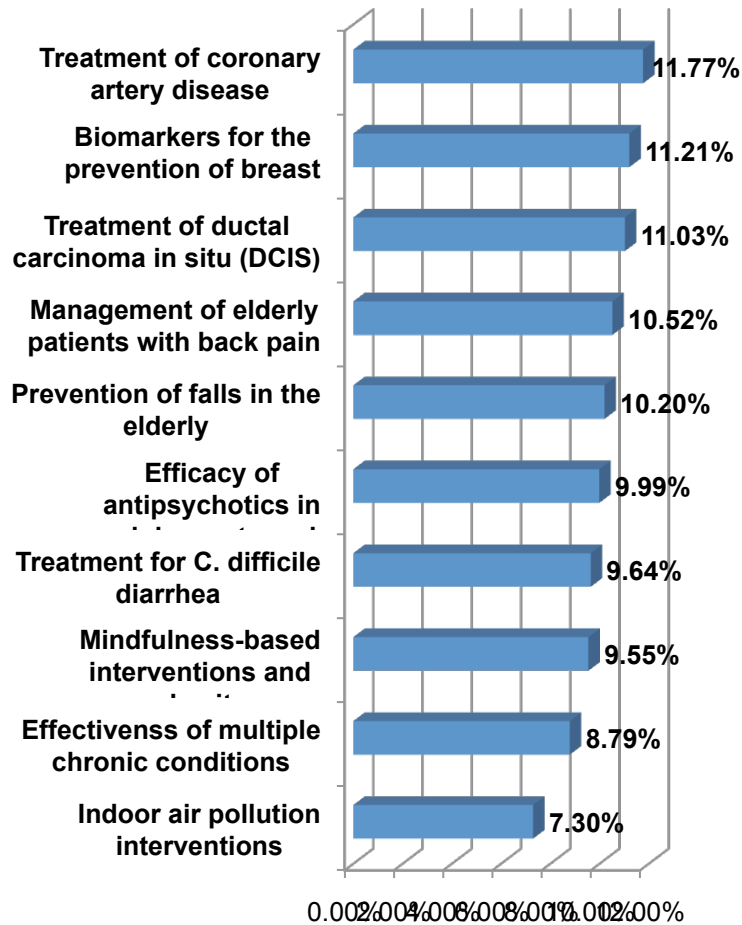
Pilot Groups used 2 Different Tools to Prioritize



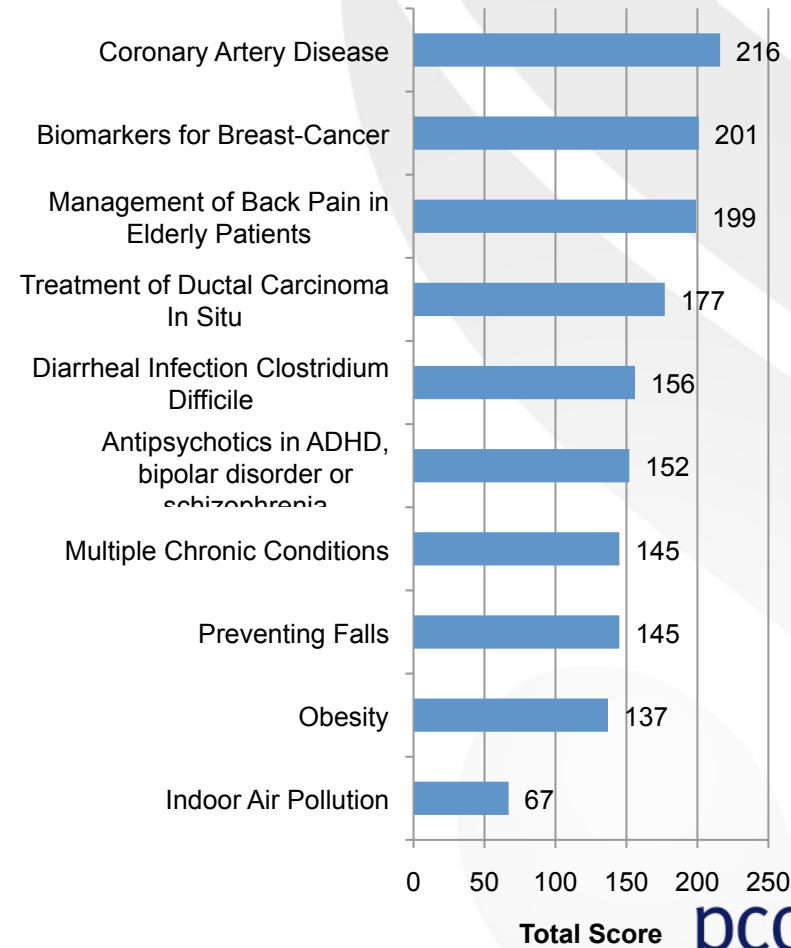
Patient-Centered Outcomes Research Institute

Group 1 Results Using Two Software Programs

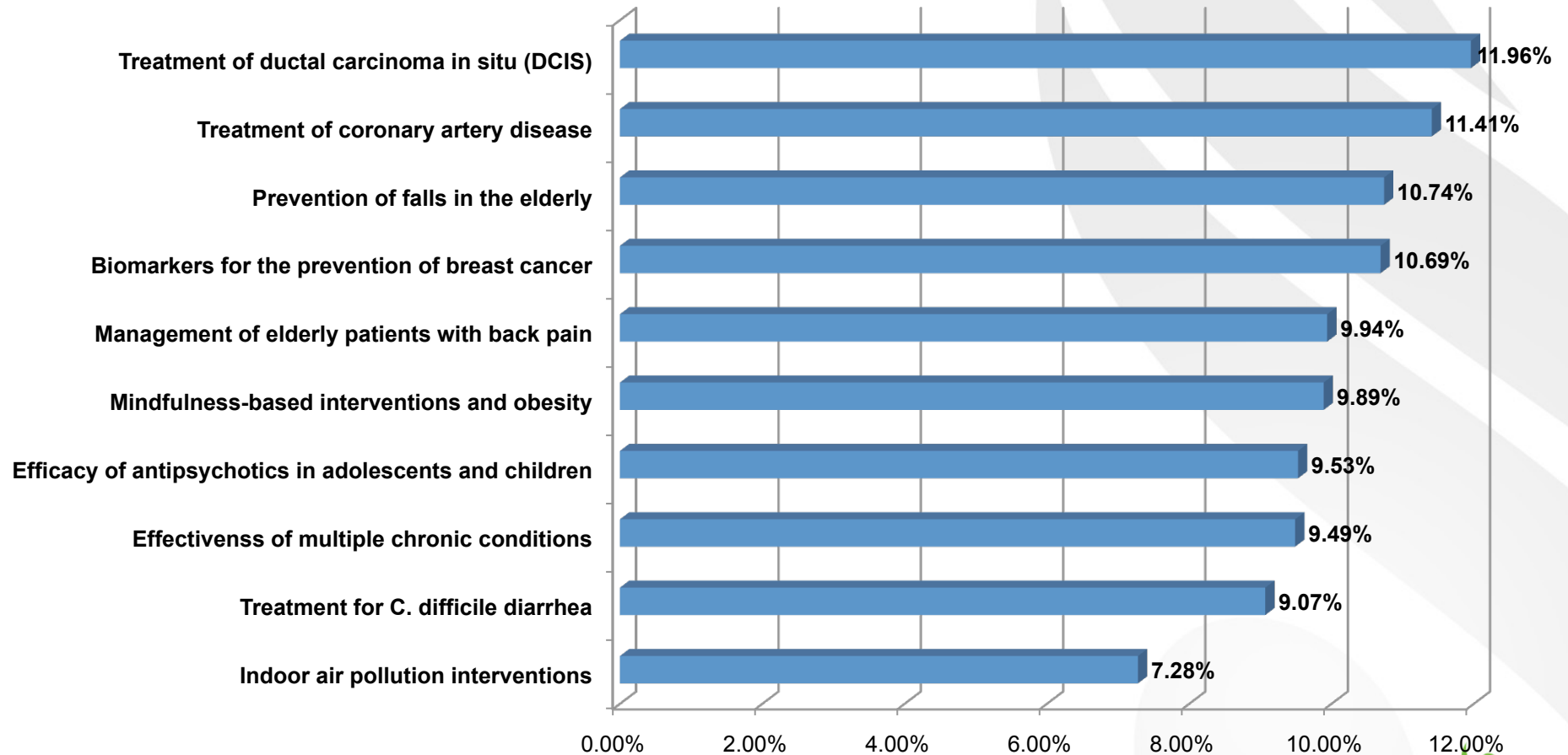
Expert Choice



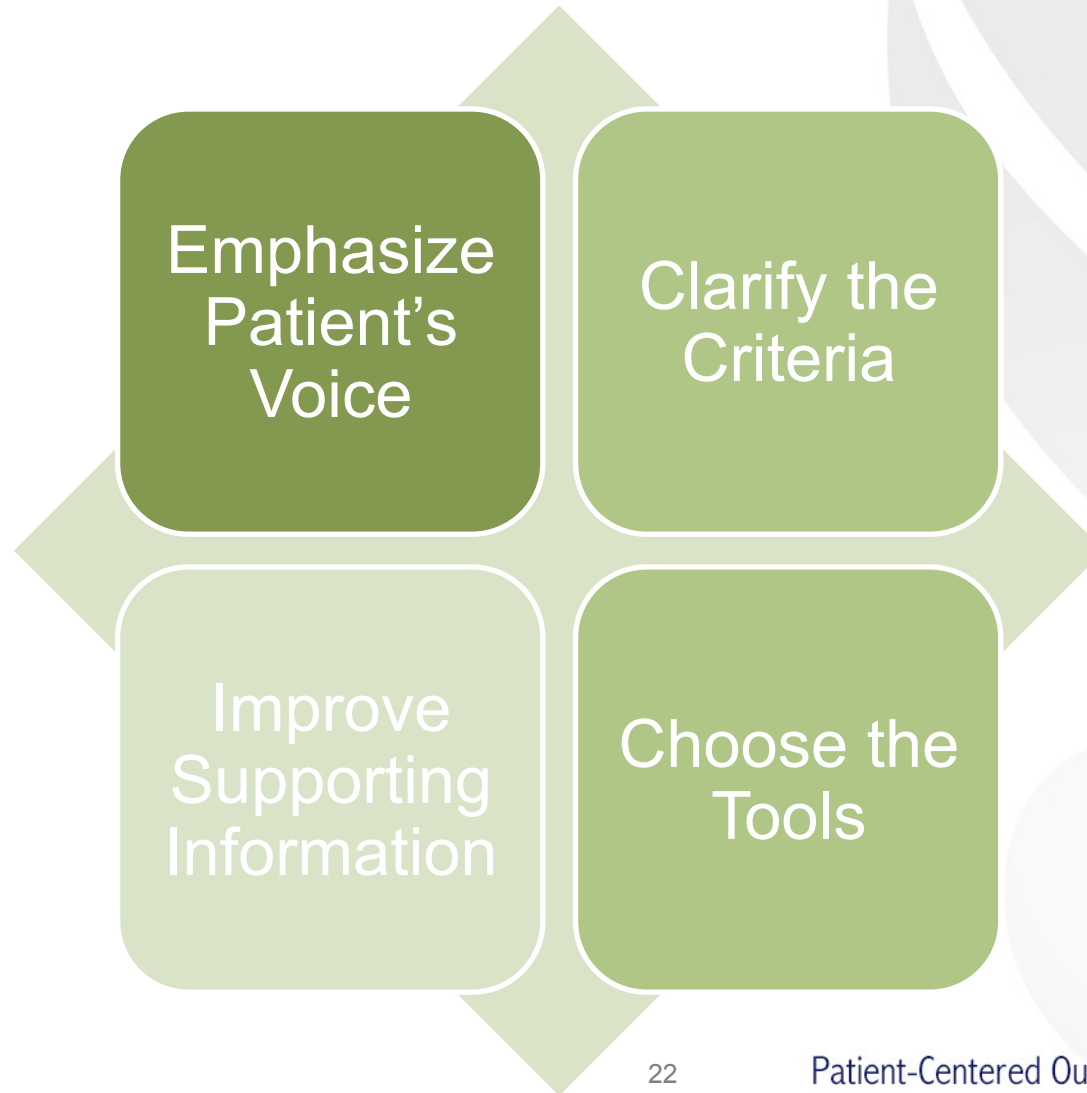
Survey Gizmo



Group 2 Results



Participants Provided Valuable Insights to Improve the Process



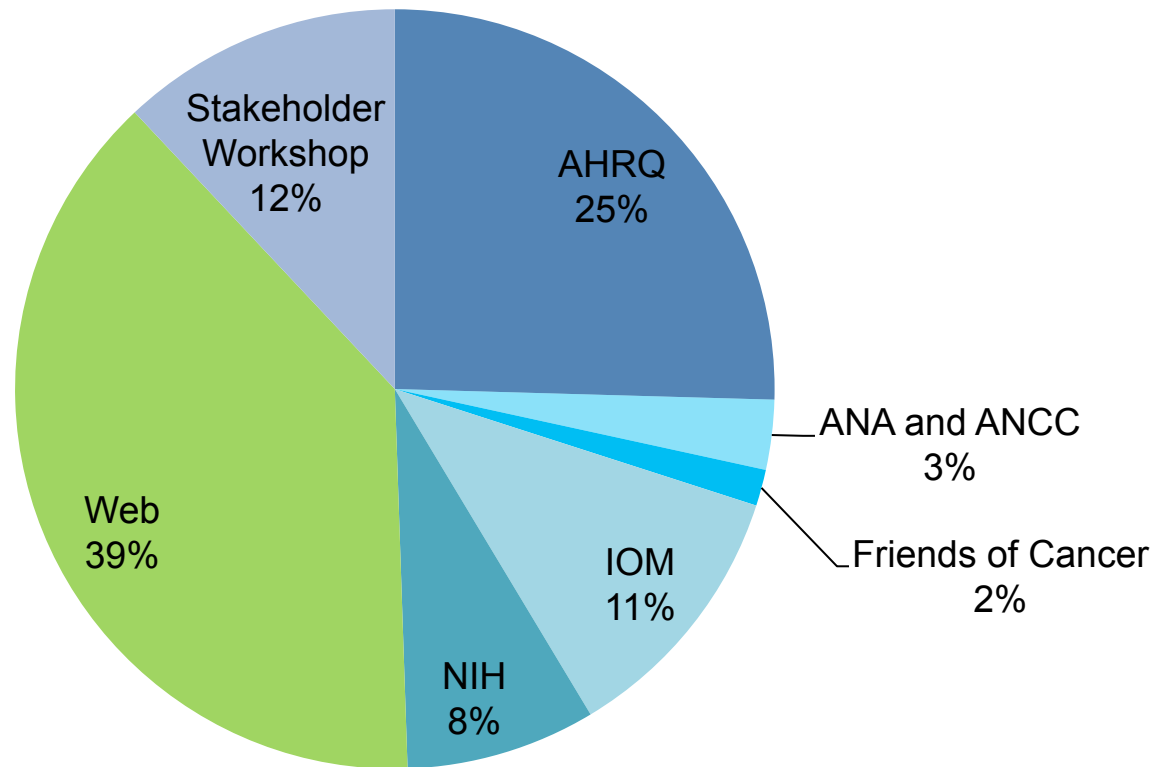
Research Topics Submitted this Cycle

 1393 topics submitted

- 552 topics excluded
- 841 topics accepted

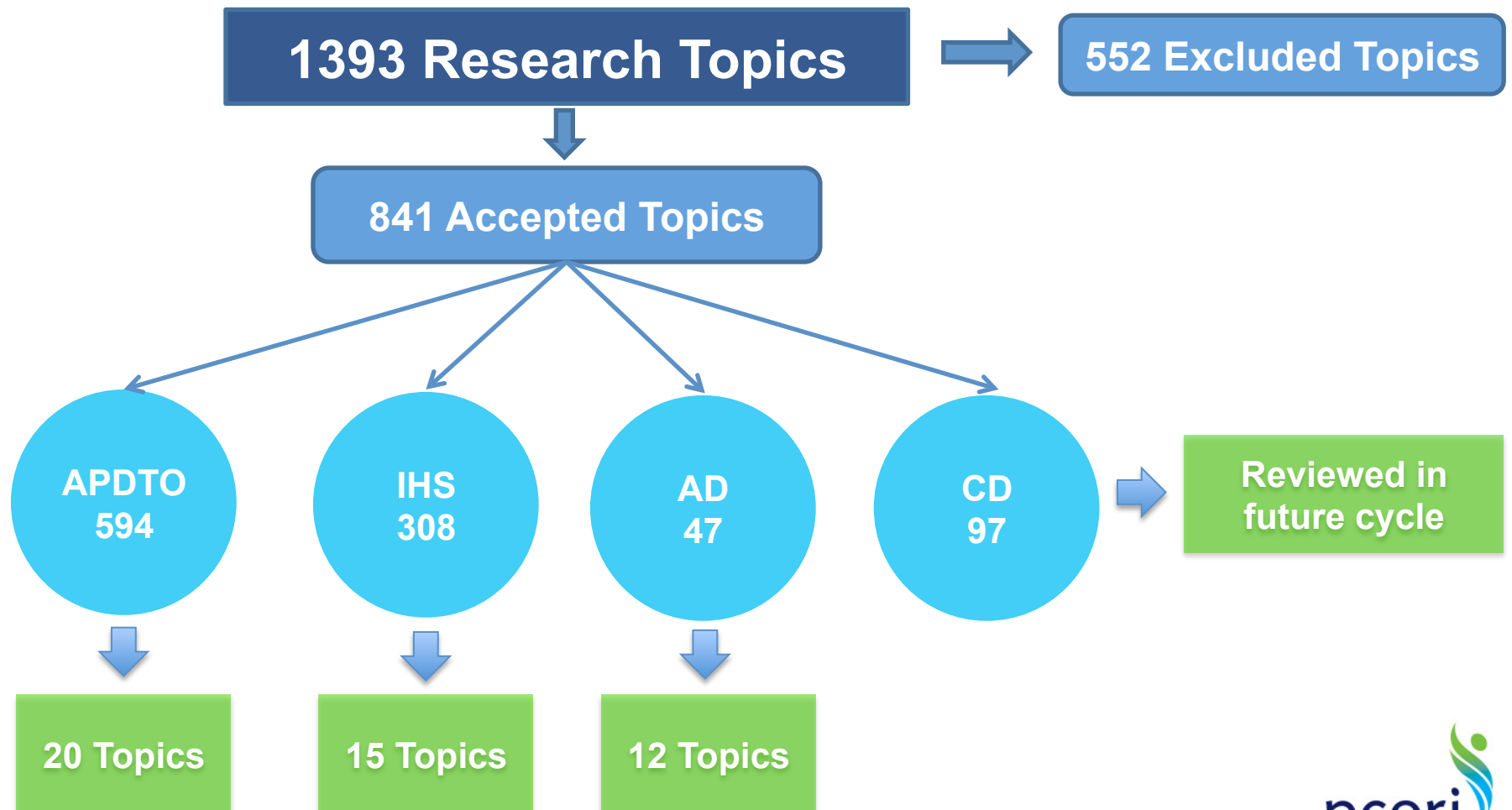


Source of Accepted Topics



ANA= American Nurses Association
ANCC is the American Nurses Credentialing Center

Prioritizing Research Topics



Steps in Ranking Research Topics



- Learn how to use the tool **Expert Choice**
- Review and discuss **topic briefs**
- Do **ranking** exercise
- Discuss results and conduct final **ranking**
- **PCORI Staff** will commission landscape reviews (Summer 2013) and present their recommendations to the **Board** (September 2013).
- Funding expected **Q1 2014**.

Expectations of Advisory Panel Participants



- Challenge
- Experience
- Honoring others' contributions
- Respectful dissonance
- Feedback to PCORI about process and improvements!

Thank you !

