



Advisory Panel on Healthcare Delivery and Disparities Research (HDDR)

Supplementary Materials

Spring 2022

I.	Agenda	2
II.	HDDR Advisory Panelist Biographies.....	4
III.	HDDR New Awards	10
IV.	Upcoming PCORI Public Events	11
V.	Strategic Planning Update Additional Information.....	12



I. Agenda

Advisory Panel on Healthcare Delivery and Disparities Research (HDDR)

May 11, 2022 (Times listed in Eastern)

11:00 AM	Welcome, Introductions, and Setting the Stage Nakela Cook, MD, MPH , Executive Director, PCORI Steve Clauser, PhD, MPA , Director, HDDR, PCORI Alicia Arbaje, PhD, MD, MPH Associate Professor of Medicine and Director of Transitional Care Research, Johns Hopkins University, <i>HDDR Advisory Panel Co-Chair</i> Jane Kogan, PhD , Associate Chief Research and Translation Officer, UPMC Center for High-Value Health Care, <i>HDDR Advisory Panel Co-Chair</i>
11:30 AM	Update on Strategic Planning: PCORI's Strategic Plan Steve Clauser, PhD, MPA , Director, HDDR, PCORI <i>-Provide an update on PCORI's strategic planning process.</i> <i>-Preview the Strategic Plan the Board will consider at the June 2022 meeting.</i> <i>-Request input from members on considerations for implementing components in the strategic plan.</i>
12:00 PM	Enhanced Awards to Support Equitable Comparative Effectiveness Research: Improving Maternal Outcomes for At-Risk Populations Kelly Dunham, MPP , Senior Manager, HDDR, PCORI Vivian Towe, PhD, MSc, MA , Program Officer, HDDR, PCORI Andrea Brandau, MPP , Program Officer, HDDR, PCORI <i>-Provide update on development of PCORI's health equity community collaborative research award.</i> <i>-Request input on scope, design, and next steps.</i>
12:50 PM	Midday Check-in
1:00 PM	LUNCH
1:30 PM	PCORI's Targeted Funding Announcement on Healthy Aging – Overview & Feedback Neeraj Arora, PhD , Associate Director, HDDR, PCORI Tabassum Majid, PhD, MAgS , Program Officer, HDDR, PCORI <i>-Provide overview of PCORI's funding announcement on Healthy Aging.</i> <i>-Request feedback from members on overall framework and areas for potential future refinement.</i>
2:35 PM	Addressing Health Disparities Faced by Sexual and Gender Minorities: Developing a Special Area of Emphasis Brendan Weintraub, MPH, CHES , Program Associate, HDDR, PCORI Soknornta Prum, MPH , Senior Program Associate, HDDR, PCORI <i>-Provide overview of PCORI's LGBTQIA+ portfolio.</i> <i>-Request feedback on comparative effectiveness research approaches for methods and interventions to address disparities in health and access to care faced by sexual and gender minorities.</i>
3:30 PM	HDDR Program Updates Steve Clauser, PhD, MPA , Director, HDDR, PCORI <i>-Provide update on HDDR portfolio and learning networks, including new awards and emerging themes.</i>
3:45 PM	End of Day Check-in

<p>4:00 PM</p>	<p>Wrap-Up and Next Steps Steve Clauser, PhD, MPA, Director, HDDR, PCORI Alicia Arbaje, PhD, MD, MPH Associate Professor of Medicine and Director of Transitional Care Research, Johns Hopkins University, <i>HDDR Advisory Panel Co-Chair</i> Jane Kogan, PhD Associate Chief Research and Translation Officer, UPMC Center for High-Value Health Care, <i>HDDR Advisory Panel Co-Chair</i></p>
<p>4:15 PM</p>	<p>Adjourn</p>

II. HDDR Advisory Panelist Biographies

Alicia Arbaje, PhD, MD, MPH (Panel Co-Chair)

Baltimore, MD

Associate Professor of Medicine and Director of Transitional Care Research, Johns Hopkins University

Representing: Researchers

Alicia Arbaje, PhD, MD, MPH, is an internist, geriatric medicine specialist, and health services researcher at Johns Hopkins University School of Medicine. She is associate professor of medicine and director of transitional care research at the Center for Transformative Geriatrics Research. Arbaje is interested in identifying the problems older adults face as they navigate through the healthcare system. She leads studies that aim to develop performance measures, define best practices, and ultimately improve the quality of care of older adults as they leave the hospital.

Arbaje has served as an invited consultant to national organizations to improve care coordination for older adults. In addition to addressing scientific audiences, she has developed media content directly for the public. She has been a health commentator at local, national, and international media outlets to draw attention to issues relevant to older adults.

Arbaje received her undergraduate degree from the University of Kansas. She graduated from Yale School of Medicine and earned her master's degree in public health at the Harvard School of Public Health. She completed a clinical and research fellowship in the Division of Geriatric Medicine and Gerontology at the Johns Hopkins School of Medicine. Arbaje recently completed a doctorate in clinical investigation at the Johns Hopkins Bloomberg School of Public Health. She continues to practice geriatric and general internal medicine.

Ana Lopez, BSN, RN

Crosby, TX

Registered Clinical Nurse, University of Texas MD Anderson Cancer Center

Representing: Patients, Caregivers, and Patient Advocates

Ana Lopez, BSN, RN, is a caregiver, previvor and patient advocate. She lost her mom to breast cancer at age 17 and, at 25, her twin sister was diagnosed with breast cancer.

Shortly after genetic testing revealed she and her sister carried the BRCA1 mutation, Lopez underwent a prophylactic mastectomy in 2016. Since then, she has been active in the hereditary breast and ovarian cancer (HBOC) community, advocating for families with a genetic predisposition to cancer. She is a peer navigator and research advocate with FORCE, a nonprofit that supports the HBOC community. She is also a peer navigator with the University of Texas MD Anderson Cancer Center's myCancerConnection program. She previously worked as a research assistant at MD Anderson where she was involved in tobacco research.

Lopez graduated with a bachelor of science in nursing from the University of Texas Health Science Center at Houston School of Nursing and has a bachelor of arts degree in psychology from the University of Houston. She is currently an oncology nurse at the MD Anderson. These experiences have led to her passion for cancer prevention, patient education, research, and advocacy for the HBOC community. She is passionate about empowering others to take control of their health journey. She is grateful to work with PCORI to continue to improve patient outcomes and provide patients with tools to make better healthcare decisions.

Ashley Valentine, MS

Lisle, IL

President, Sick Cells

Representing: Patients, Caregivers, and Patient Advocates

Ashley Valentine is a co-founder of Sick Cells along with her older brother Marqus Valentine. Marqus was diagnosed with sickle cell disease (SCD), and she spent much of her childhood in hospital playrooms while Marqus was frequently hospitalized for pain crises, fever, and multiple complications from SCD.

While in high school, Valentine first understood the disparities for SCD when her brother developed seizures and lost his motor skills, and their family's insurance would not cover Marqus' rehabilitation. The insurance company told the Valentines that Marqus was considered "not disabled enough" for medical help. Valentine and the family worked together to rehabilitate Marqus at home; they taught him how to hold a fork again and

redeveloped his ability to speak, leading to a successful recovery. This event solidified Valentine's drive to educate others about SCD and advocate on behalf of her family and the sickle cell community.

Valentine completed her master's degree in Research Methods from the University of Aberdeen, Scotland. Valentine focused on disparities in health care for people with SCD in London. After graduate school, Valentine worked with the University of Illinois in Chicago's sickle cell program and later transitioned into policy work in Washington, DC, and eventually co-founded Sick Cells with Marqus.

Valentine has a focus on improving the lives of people with SCD and ensuring that SCD advocates are involved with all decisions as it relates to their health.

Brandi Ring, MD, FACOG, FAWM

Houston, TX

OB/GYN, Associate Medical Director, Center for Children and Women - Southwest

Representing: Clinicians

Brandi Ring is originally from Westminster, Colorado. After graduating from the University of Colorado Boulder, she earned her master's degree and completed medical school at Boston University School of Medicine. She developed a deep passion for serving the underserved and developing health policy and became an advocate for patients and physicians through her work with the American Medical Association. She completed her residency in obstetrics and gynecology at York Hospital in York, Pennsylvania. Ring actively advocates for her patients, her colleagues, and her specialty. She can frequently be found in state and national capitols discussing health policy. Her specialty interests include high-risk and low-risk pregnancy, family planning, wilderness medicine, adolescent and LGBTQ+ care, well-women care, and preventative health.

She is the President of the Aurora-Adams County Medical Society, serves on the Colorado Medical Society board, and is honored to be the CMS Medical Student Component Board Liaison. She is also active in her specialty society, the American College of Obstetricians and Gynecologists where she has served on the executive board and is the Immediate Past Chair of the Junior Fellow College Advisory Council.

Diana Cejas, MD, MPH

Durham, NC

Assistant Professor of Neurology and Faculty of the Carolina Institute for Developmental Disabilities at UNC-Chapel Hill

Representing: Clinicians

Diana Cejas, MD, MPH is an Assistant Professor of Neurology and faculty of the Carolina Institute for Developmental Disabilities at UNC-Chapel Hill. Through her clinical work, she cares for youth with a broad spectrum of developmental disabilities and complex neurological and psychiatric comorbidities. She seeks to improve health outcomes in this population as they transition to adulthood and serves as Principal Investigator of studies that explore this phase of their lives. Dr. Cejas has also devoted much of her career to improving communication between healthcare providers and the broader disability community, particularly young disabled People of Color.

Dr. Cejas is involved with national activities focused on patient advocacy and improving care for disabled youth. She is particularly interested in digital advocacy and uses both social media and print media as tools in her efforts.

After being diagnosed with cancer and surviving a stroke during her residency training, Dr. Cejas learned about the power of patient narratives in research, advocacy, and clinical care. She shares her own story and other commentary on disability via essays, Op-Eds, and works of creative nonfiction. Her work has appeared or is forthcoming in medical journals including The Journal of the American Medical Association, literary magazines including The Iowa Review and Catapult, popular media, and anthologies including Disability Visibility, among others.

Jane Kogan, PhD (Panel Co-Chair)

Pittsburgh, PA

Associate Chief Research and Translation Officer, UPMC, Center for High-Value Health Care

Representing: Payers

Jane Kogan, PhD, is Associate Chief Research and Translation Officer at the University of Pittsburgh Medical Center (UPMC), Center for High-Value Health Care (Center), a nonprofit research organization that she helped to establish which is housed within UPMC Insurance Services Division (ISD). The center's mission is to advance US healthcare policy and practice through the development and dissemination of innovative service delivery and payment models that support value-driven health care.

Since the center's founding in 2010, Kogan has worked closely with UPMC leadership to leverage the unique experiences and opportunities of this large integrated delivery and finance system to drive continuous learning and healthcare improvements. Her expertise is in the development, design, and implementation of large-scale health services research studies, with a focus on real-world, person-centered applicability of findings. She also has extensive experience in the use of qualitative and quantitative research methods and in the conduct of pragmatic comparative effectiveness research studies to improve quality and efficiency of care for those with chronic conditions.

She has had considerable involvement with and oversight of PCORI-funded studies at the center, including serving as stakeholder and co-investigator. She is passionate about the translation and dissemination of patient-centered results emanating from these studies and regularly contributes to manuscript development, dissemination strategies, and translation of results for stakeholders such as patients/families, payers, providers, and policy makers.

Kogan is a clinical psychologist by training and clinical faculty in the Department of Psychiatry, University of Pittsburgh School of Medicine. She completed her undergraduate work at the University of Pittsburgh and graduate work at West Virginia University. Her pre- and postdoctoral training occurred at Massachusetts General Hospital, Harvard Medical School, where after training she continued her research and clinical work until returning to Pittsburgh in 2004.

Jeffrey Oliver, MBA

Atlanta, GA

Principal, Training, Development and Design, Training by Seeds, LLC

Representing: Patients, caregivers, or representatives of patient advocacy organizations

Jeffrey Oliver was introduced to PCORI and the patient-centered review process by a friend with whom he had participated in a local weight loss competition. As result of participation in this competition, his attitude about health, wellness, and family history changed. He grew up in rural farming environment where access to state-of-the-art health care was limited. His family and surrounding community disproportionately suffer from chronic illness. He saw PCORI as an opportunity to not only give voice to the concerns of these communities, but also possibly bring positive health changes to their lives.

Oliver is currently a police officer, first responder, and principal at Training By Seeds, LLC. He has more than 20 years of sales, project management, business development, consulting, law enforcement, and training experience. He is, unfortunately, no stranger to the healthcare system. For more than 10 years, two of his siblings lived with often debilitating chronic rare illnesses. Both felt that they were more important to their healthcare providers as test cases than as patients. Oliver remembers the sense of helplessness that he felt. He believes PCORI addresses this disparity head-on and his goal is to be a part of the continuous improvement in health care.

Kathleen Kieran, MD, MSc, MME

Seattle, WA

Pediatric Urologist, Seattle Children's Hospital

Representing: Clinicians

Kathleen Kieran, MD, MSc, MME, is a board-certified pediatric urologist at Seattle Children's Hospital and an associate professor of urology at the University of Washington. Her clinical interests include general and prenatal urology and her research interests include healthcare disparities, impact of public health initiatives on pediatric urologic health, and teaching and optimizing communication skills in surgeons.

Kieran received her bachelor's and master's degrees from Tufts University in Medford, Massachusetts, and her medical degree from Boston University School of Medicine. She also holds a master's degree in clinical research design and statistics from the University of Michigan and a master's degree in medical education from the

University of Iowa. She completed an internship in general surgery and a residency in urology at the University of Michigan, followed by a fellowship in pediatric urology at the University of Tennessee. She is a member of numerous local, regional, and national societies. Her interest in PCORI stems from her longstanding advocacy for access to quality health care for underserved and *othered* populations. As a member of a PCORI advisory board, Kieran will advocate for the prioritization of the patient's voice in directing research, and for physicians and other medical providers to better understand the patient-identified barriers to care delivery.

Kristina M. Cordasco, MD, MPH, MSHS

Los Angeles, CA

Core Investigator, VA Health Services Research Center for the Study of Healthcare Innovation, Policy, and Practice

Representing: Researchers

Kristina Cordasco is a core investigator with the Veterans Health Administration Health Service Research and Development Service Center for the Study of Healthcare Innovation, Implementation, and Policy; a health services researcher, quality improvement leader, and internal medicine physician with the VA Greater Los Angeles (GLA) Healthcare System; and Associate Clinical Professor of Medicine at the University of California, Los Angeles (UCLA). Cordasco conducts partner-based research and quality improvement advancing the delivery and equity of care, designing and deploying direct improvements in care, as well as providing data to inform the decisions of healthcare system leaders and policy makers, clinicians, and patients.

She hopes to contribute to PCORI her expertise in veterans' health and health care, care coordination, organization of care, and women's health. Cordasco received her medical degree and master of public health from Johns Hopkins University, and a master of science in health services from UCLA. She is an alum of the Robert Wood Johnson Clinical Scholars Program.

Marissa D. Sanders, MPH, CPHRM

Matteson, IL

Manager, Quality Assessment, American Dental Association

Representing: Payers

Marissa D. Sanders, MPH, CPHRM, is the manager for quality assessment in the Center for Dental Benefits, Coding, and Quality with the American Dental Association. With more than 12 years in the healthcare industry, she has dedicated her career to partnering with providers to establish and implement quality improvement initiatives, reduce patient and organizational risk, and promote patient safety at the practice, health system, and policy levels. She has worked in a variety of settings within the healthcare industry including academic medical centers and health plans and is committed to working to improve the public's health through strategic program development, improving care delivery, and empowering patients.

Nicole LeBlanc (New Panelist)

Silver Spring, MD

Coordinator, Person-Centered Advisory and Leadership Group, Human Services Research Institute

Representing: Patients, Caregivers, and Patient Advocates

Nicole LeBlanc has a keen ability and interest in public policy and excels at communicating the needs of people with developmental disabilities to public officials. She worked for over eight years at Green Mountain Self-Advocates (GMSA) in Vermont as Advocacy Director, supporting her peers with disabilities to feel comfortable talking to their elected officials about their needs. Also while at GMSA, Nicole served as the Project Assistant for the Inclusive Healthcare Partnership Project in which she researched tools that would assist people with intellectual and development disabilities (IDD) in meeting their healthcare needs. In 2012, Nicole completed an internship at the Administration on Intellectual and Developmental Disabilities through the Washington Center in Washington, DC and earned a certificate of professional studies from the University of Vermont. In 2018, Nicole graduated from the VT LEND program, becoming the first self-advocate to complete it. She has presented keynotes on the dignity of risk at statewide self-advocacy conferences in Alabama, Missouri, and Rhode Island. Since 2011, Nicole has consulted for Self-Advocates Becoming Empowered and the Autistic Self-Advocacy Network developing self-advocacy tools and curriculums, presenting webinars and video blogs on the topics of

health care, autism, presuming competence, self-managed services, voter access, and employment of people with disabilities. In August 2016, Nicole moved to Maryland to take part in the Paul Marchand Public Policy internship at the Association of University Centers on Disabilities.

Nicole is not willing to shy away from taking on big challenges and new adventures. In 2017, Nicole traveled to Iceland and Ireland as part of the American Association on IDD delegation. In the fall of the same year, Nicole was the advocacy specialist for southern Maryland where she assisted self-advocates with challenges in the service system. In 2018, Nicole served as the Dr. Ruth Sullivan Policy Fellow. From March 2018 to March 2019, Nicole was the Self-Advocacy Resource and Technical Assistance Center fellow for National Disability Rights Network where she created a booklet advocating for policies that promote competitive integrated employment. In April 2019, Nicole joined the Human Services Research Institute as the coordinator of the Person-Centered Advisory and Leadership Group (PAL-Group) within the National Center on Advancing Person-Centered Practices (NCAPPS). In addition to supporting communication with the PAL Group, she develops cognitively accessible project materials and resources that reflect the experiences of people with disabilities. In the summer of 2019, Nicole won the David Joyce Advocate of the Year award for outstanding policy advocacy on Capitol Hill.

In 2020, Nicole was a part of the social media team creating Facebook events for ADA30 and National Disability Employment Awareness Month. In October of that same year, Nicole presented at the Inclusion Works conference, discussing “Turning Challenge into Opportunity - Getting People with IDD Work from Home Jobs in Light of COVID-19.” In December 2020, Nicole became a Self Advocate Advisor with TASH at the Administration on Disabilities Disability Employment Technical Assistance Center where she researches material on employment and self-advocacy, recruits focus group members, and drafts blogs and social media posts.

In May of 2021, she was a keynote speaker for the Wisconsin Board for People with Disabilities Employment First Conference on dignity of risk and person-centered planning in employment. In August 2021, Nicole began Person-Centered Planning with Shared Support Maryland for the Expectations Matter Grant. From September to March 2021, Nicole was a Care Fellow with Caring Across Generations, focusing on the voices and needs of seniors, people with disabilities, and caregivers.

Rainu Kaushal, MD, MPH

New York, NY

Professor of Healthcare Policy and Research, New York-Presbyterian Hospital

Representing: Researchers

Rainu Kaushal, MD, MPH, is chair and Nanette Laitman Distinguished Professor of Healthcare Policy & Research, and chief of healthcare policy and research at New York-Presbyterian Hospital/Weill Cornell Medical Center. Kaushal, an information scientist and health services researcher, is building one of the country's leading departments in healthcare delivery science. She is the principal investigator of the PCORI-funded INSIGHT network (formerly the NYC Clinical Data Research Network), which hosts the largest urban clinical dataset in the country. INSIGHT, which includes all of New York City's academic medical centers, has contributed to over 40 studies that will guide healthcare delivery and clinical trial design. Kaushal is also a principal investigator for the New York City consortium of the National Institutes of Health's All of Us Precision Medicine Initiative. She is involved in national activities, including the National Academy of Medicine, through participation in steering committees, cochairing workgroups and meetings, serving as an expert reactor to reports, and presenting her work.

Thomas James, III, MD

Pittsburgh, PA

Senior Medical Director, Passport Health Plan by Molina Health Care

Representing: Payers

Thomas James, III, MD, is senior medical director with Passport Health Plan by Molina Health Care. In this capacity he provides the clinical oversight to Molina Health Care with his expertise in Medicaid, Medicare, and commercial health plans as well as quality measurement and enhancement. Prior to joining Molina Health Care.,

James has served as senior medical director for such organizations as Baptist Health in Kentucky, AmeriHealth Caritas, Humana, Anthem, Traveler's Health Network, Sentara, Highmark, and HealthAmerica.

He has been active on many volunteer boards in the arts (e.g., Pittsburgh Opera Board, Kentucky Opera Board, Louisville Visual Arts Association), medical service (e.g., Laughlin Children's Center in Sewickley, Project Sunshine in New York, Partners for a Healthy Louisville), and medical policy in Washington (e.g., National Quality Forum, National Committee for Quality Assurance, AAAHC, Picker Institute, and MED CAC).

James is board certified in internal medicine and pediatrics. He received his medical degree from the University of Kentucky and served his residencies at Temple University Hospital, Pennsylvania Hospital, and Children's Hospital of Philadelphia. He maintains a limited clinical practice in Wexford, Pennsylvania.

Varleisha Gibbs, PhD, OTD, OTR/L

Vice President, Practice Engagement and Capacity Building, American Occupational Therapy Association, Inc.

Representing: Researchers

Varleisha Gibbs has been an occupational therapist for more than 17 years. She currently serves as the Vice President of Practice Engagement and Capacity Building for the American Occupational Therapy Association, supporting diversity, equity, and inclusion initiatives for the field of occupational therapy. Prior, she served as the Scientific Programs Officer with the American Occupational Therapy Foundation. She is a graduate of the University of Delaware and Columbia University programs in occupational therapy. In addition, she holds doctoral degrees from Thomas Jefferson University and Seton Hall University with a doctorate in health sciences leadership from Seton Hall University's School of Health and Medical Sciences. As a tenured Associate Professor, she was actively involved in scholarship and mentorship.

Gibbs has published in peer-reviewed journals in addition to authoring two books. She presents nationally and internationally on evidence-based topics and promoting the role of occupational therapy. She is the inaugural chair of Delaware's first master's of occupational therapy program at Wesley College. To this end, she has years of experience in program development, strategic planning, and assessment.

Xiaoduo Fan, MD

Andover, MA

Associate Professor, Psychiatry, University of Massachusetts Medical School

Representing: Hospitals and Health Systems

Xiaoduo Fan, MD, is a board-certified psychiatrist and an associate professor of psychiatry at University of Massachusetts Medical School. He is director of the Psychotic Disorders Clinical and Research Program and director of the China Mental Health Program at UMass. Prior to joining UMass, Fan was a staff psychiatrist at Massachusetts General Hospital and a member of the faculty at Harvard Medical School for seven years.

Fan's research focuses on developing innovative pharmacological treatment and community-based psychosocial interventions targeting the triple jeopardy faced by patients with severe mental illness: a devastating mental disorder, serious comorbidity conditions such as obesity, diabetes and cardiovascular disease, and co-occurring substance use disorders. The goal of our research is to improve real-life functioning and promote recovery in patients who suffer from severe mental illness. Fan fully embraces the mission of PCORI and considers patient-centered outcomes research extremely important to help patients and other important stakeholders make informed health decisions.

Fan received his medical degree from Peking University in Beijing, China. He completed psychiatry residency training at the State University of New York. He obtained a master's degree in public health at Harvard School of Public Health in Boston. In addition, he earned a master's degree in clinical psychology at Chicago Medical School in Chicago.

III. HDDR New Awards

Improving Healthcare Systems

Comparing Hospital to Home Transition Interventions for Children with Medical Complexity

Cycle 2 2021

Principal Investigators: Patrick Brady, MD, MS & Katherine Auger, MD, MS

Institution: Cincinnati Children's Hospital Medical Center

[Click here to see lay abstract on PCORI's website](#)

Comparative Effectiveness of Two Approaches to Symptom Monitoring in Hemodialysis

Cycle 2 2021

Principal Investigators: Jennifer Flythe, MD, MPH & Laura Dember, MD

Institution: The University of North Carolina at Chapel Hill

[Click here to see lay abstract on PCORI's website](#)

Pragmatic Clinical Studies

Pragmatic Trial to Enhance Quality, Safety, and Patient Experience in COPD – Equip COPD

Cycle 2 2021

Principal Investigators: David Au, MD, MS & Lucas Donovan, MD, MS

Institution: VA Puget Sound Health Care System

[Click here to see lay abstract on PCORI's website](#)

Improving Postpartum Maternal Outcomes for Populations Experiencing Disparities Targeted PFA

Trauma-Informed Approach to Timely Detection and Management of Early Postpartum Hypertension

Cycle 2 2021

Principal Investigators: Rafael Perez-Escamilla, PhD & Heather Lipkind, MD

Institution: Yale School of Public Health

[Click here to see lay abstract on PCORI's website](#)

Nonsurgical Options for Women with Urinary Incontinence Targeted PFA

Comparative Efficacy of Advanced Practice Provider Co-Management vs. Electronic Decision Support in Improving Incontinence Outcomes in a Diverse Population of Aging Women

Cycle 2 2021

Principal Investigator: Jennifer Anger, MD, MPH

Institution: University of California San Diego

Lay Abstract Forthcoming

IV. Upcoming PCORI Public Events

Advisory Panel on Clinical Trials Spring 2022

Friday, May 13 1:00PM-5:00PM EST

[Register Here](#)

Cycle 2 2022 – Health System Strategies to Address Disparities in Hypertension Management and Control Targeted PFA Applicant Town Hall

Monday, May 16 12:00PM-1:00PM EST

[Register Here](#)

Advisory Panel on Patient Engagement Spring 2022 Meeting

Monday, May 16 11:30AM-5:00PM EST

[Register Here](#)

Advisory Panel on Rare Disease Spring 2022 Meeting

Wednesday, May 18 12:30PM-5:00PM EST

[Register Here](#)

Cycle 2 2022 – Improving Postpartum Maternal Outcomes for Populations Experiencing Disparities Targeted PFA Applicant Town Hall

Thursday, May 19 12:00PM-1:00PM EST

[Register Here](#)

Board of Governors Meeting (In-Person and Online)

Monday, June 13 9:00AM-4:00PM EST

Tuesday, June 14 9:00AM-4:00PM EST

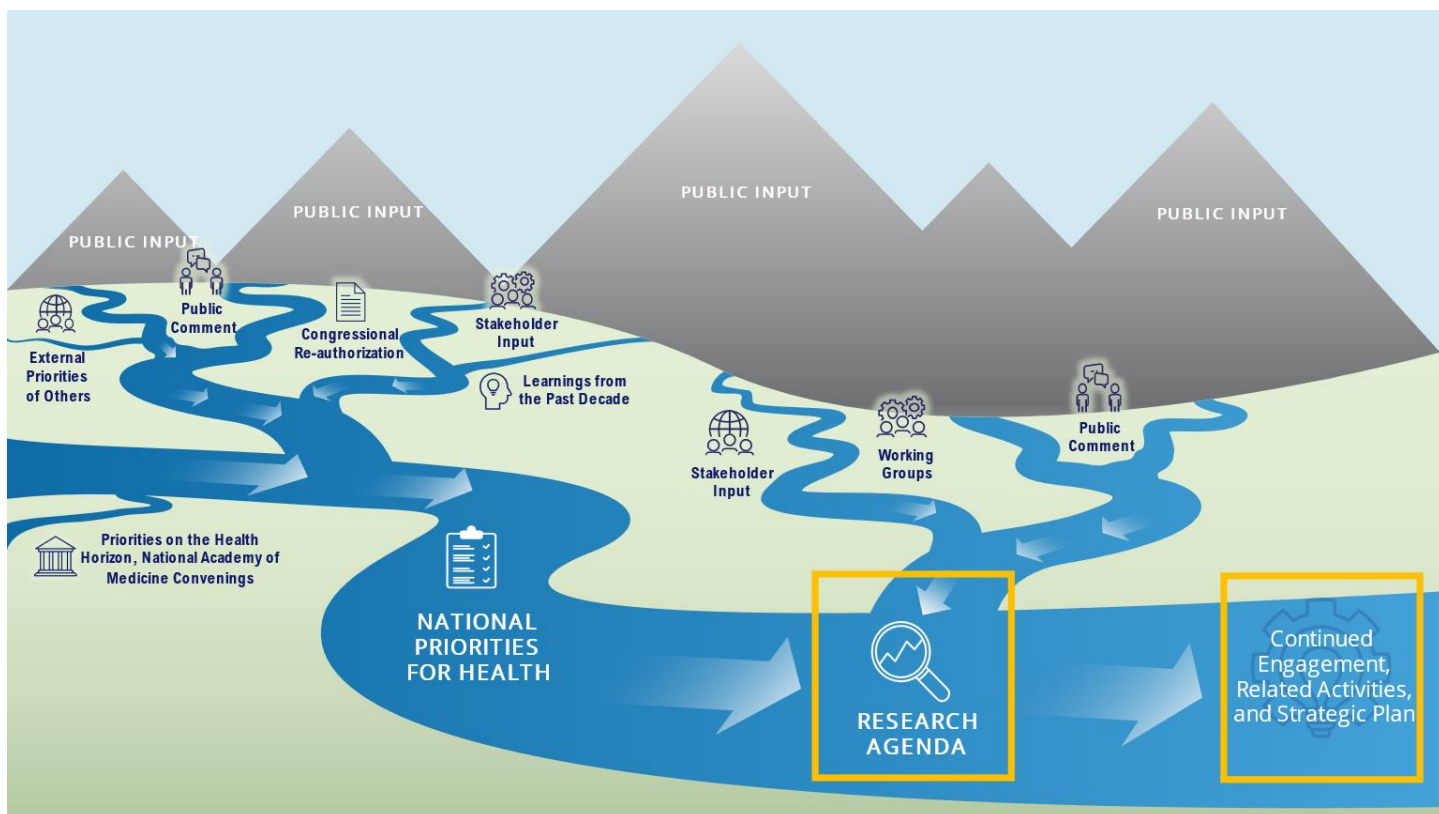
[More Information Here](#)

Science of Engagement PFA Applicant Town Hall

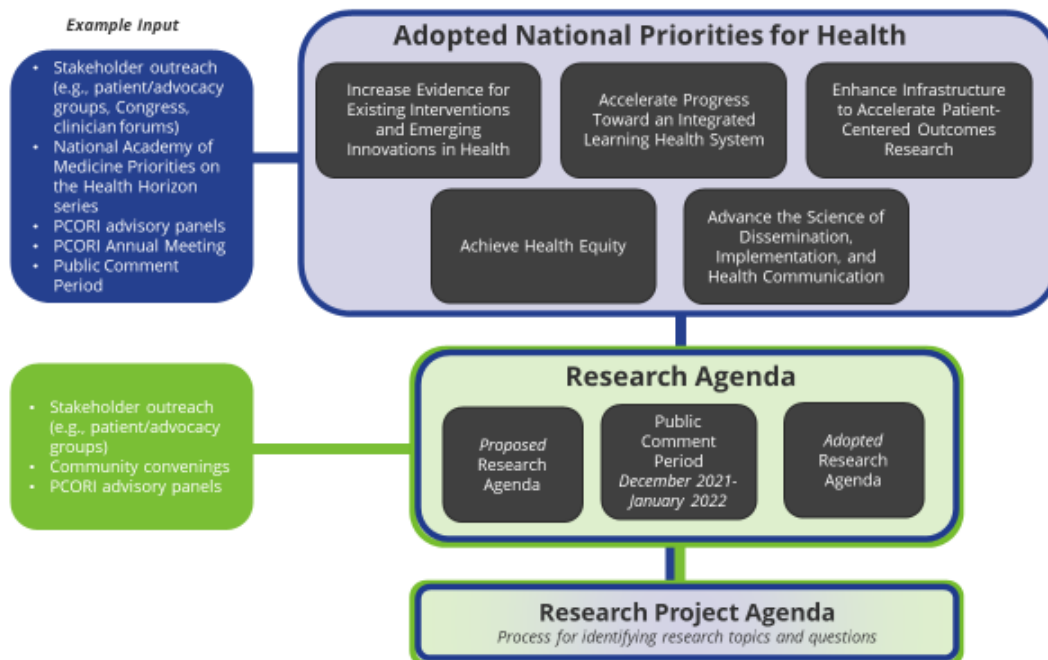
Tuesday, July 19 12:00PM-1:00PM EST

[Register Here](#)

V. Strategic Planning Update Additional Information



Stakeholder and Public Input Inform Work



Moving Towards Implementation Planning

