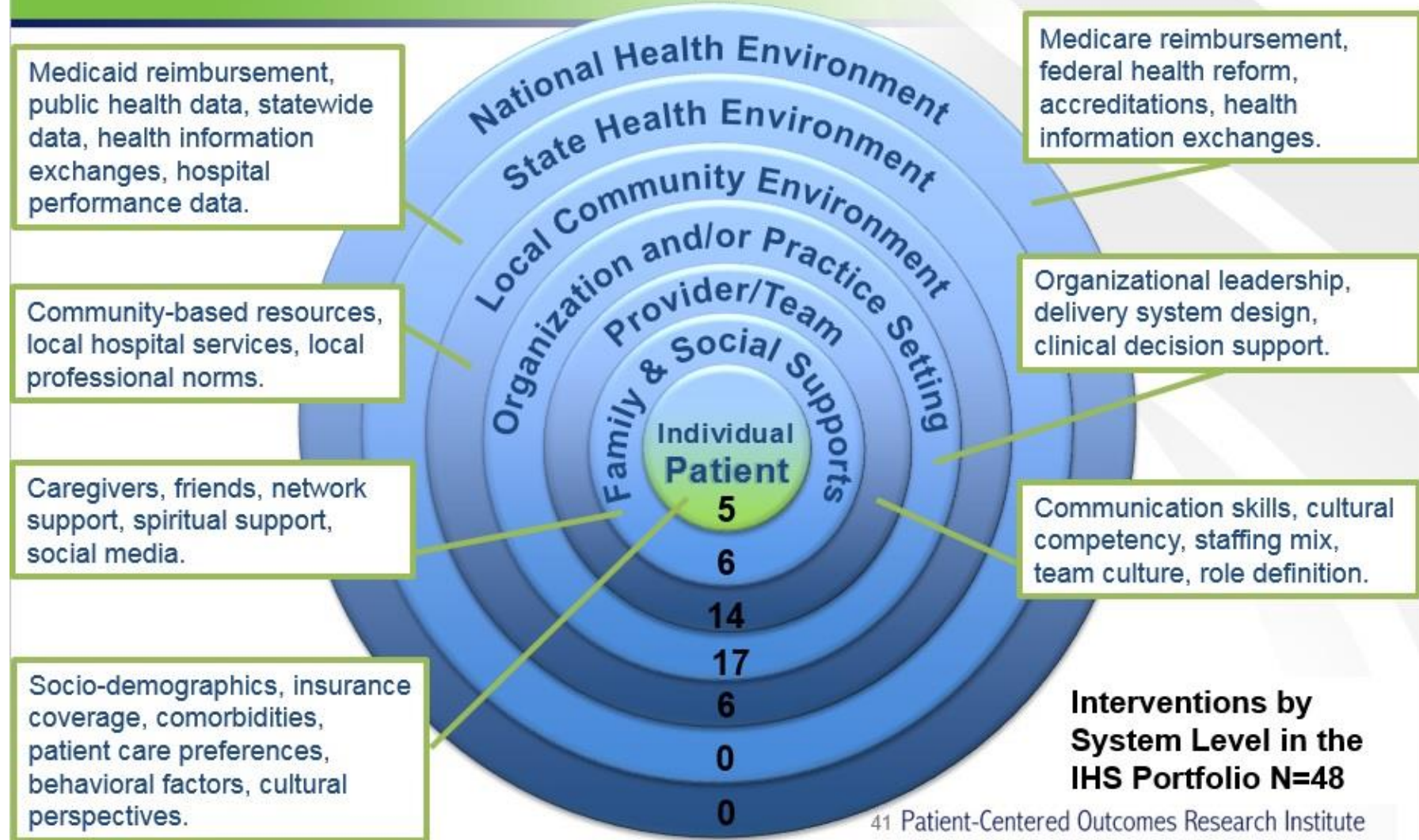


Advisory Panel on Improving Healthcare Systems – Oct. 2, 2014 Meeting
Strategic Framework Discussion Hand-out
DRAFT - FOR DISCUSSION ONLY – DO NOT DISTRIBUTE

The Healthcare System

Figure adapted from: Taplin, S. H., Clauser, S., et al. (2012) Introduction: Understanding and Influencing Multilevel Factors Across the Cancer Care Continuum. *Journal of the National Cancer Institute*, 44, 2-10.

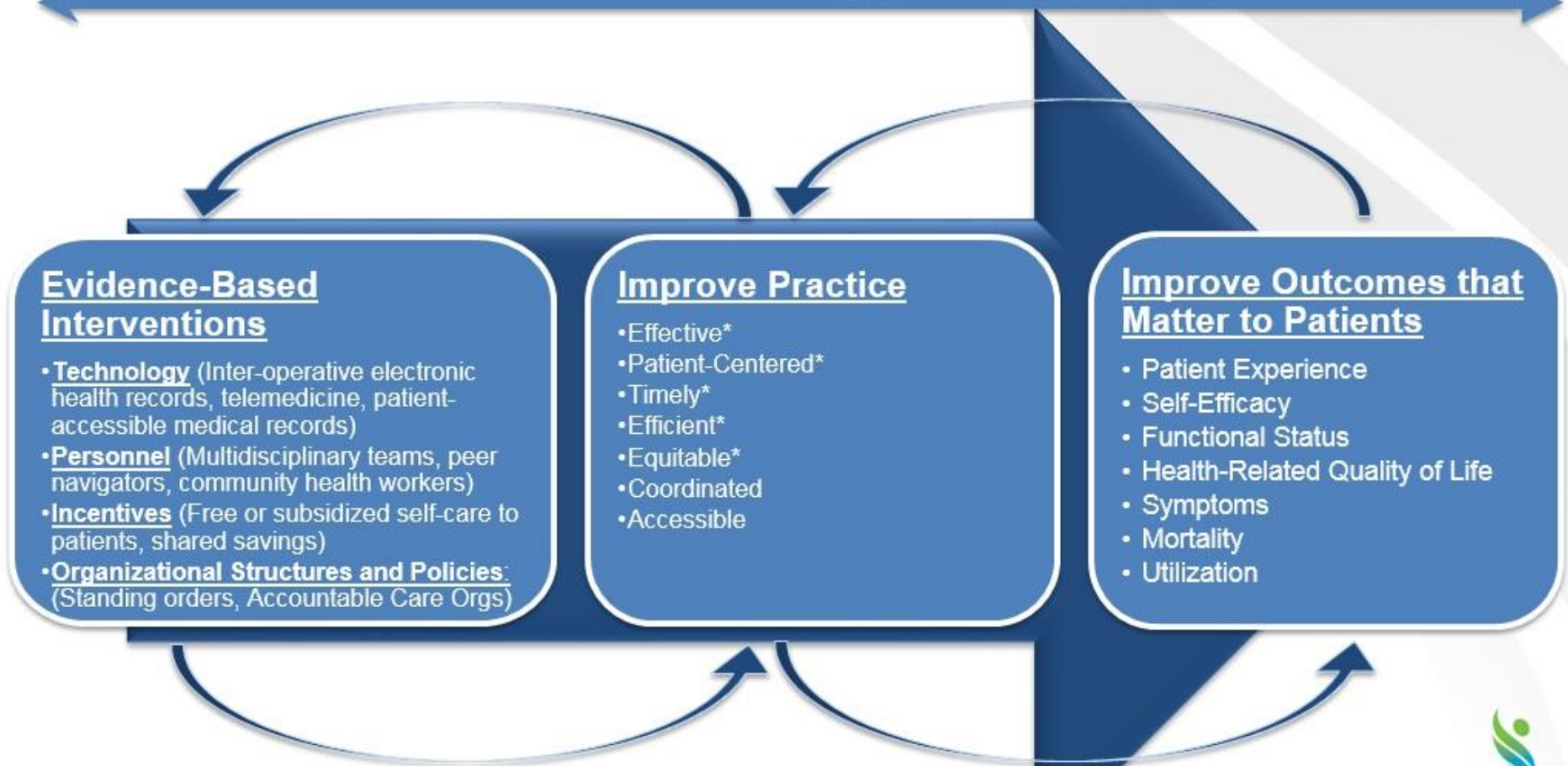


Advisory Panel on Improving Healthcare Systems – Oct. 2, 2014 Meeting
Strategic Framework Discussion Hand-out
DRAFT - FOR DISCUSSION ONLY – DO NOT DISTRIBUTE

System Level	# of Studies in the IHS Portfolio	Examples of Comparisons in the IHS Portfolio
Individual Patient	5	Compares the use of an electronic asthma medication tracker to standard primary care (no tracker) for children with asthma and their parents and caregivers
Family & Social Supports	6	Compares the use of advance planning tools for access to community-based and in-home services for the frail elderly and their caregivers to an electronic educational intervention of available services and programs.
Provider/Team	14	Compares nursing home staff team-based training and palliative care delivery using an adapted National Quality Forum (NQF) protocol to a standard nursing home palliative care protocol.
Organization and/or Practice Setting	17	Compares elements of Patient-centered medical home (e.g., addition of a primary care physician in the context of regularly scheduled dialysis sessions and health promoters to help support patients and their caregivers) to traditional team-based specialty care for end stage renal disease patients
Local Community Environment	6	Compares an Emergency Department-to-home community health worker that links patients with community-based social-support (e.g. home-delivered meals) and medical follow-up, to care transition programs using written & verbal discharge instructions alone.

IHS Strategic Framework

Patient and Stakeholder Engagement Throughout



*Adopted from: Institute of Medicine. *Crossing the Quality Chasm: A New Health System for the 21st Century*. Washington, DC: The National Academies Press, 2001.