

# Kickoff Webinar for PCORI's Proposed National Priorities for Health

---

June 29, 2021

# Today's Presenters



Nakela L. Cook  
Executive Director



Kristin L. Carman  
Director,  
Public and Patient  
Engagement



Andrew Hu  
Director,  
Public Policy and  
Government Relations

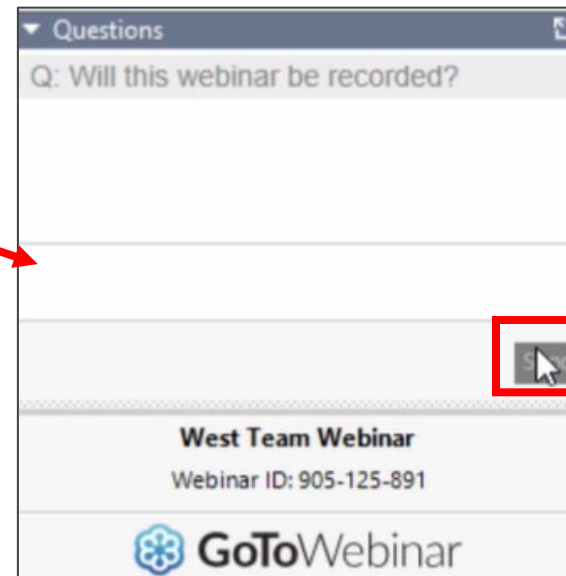
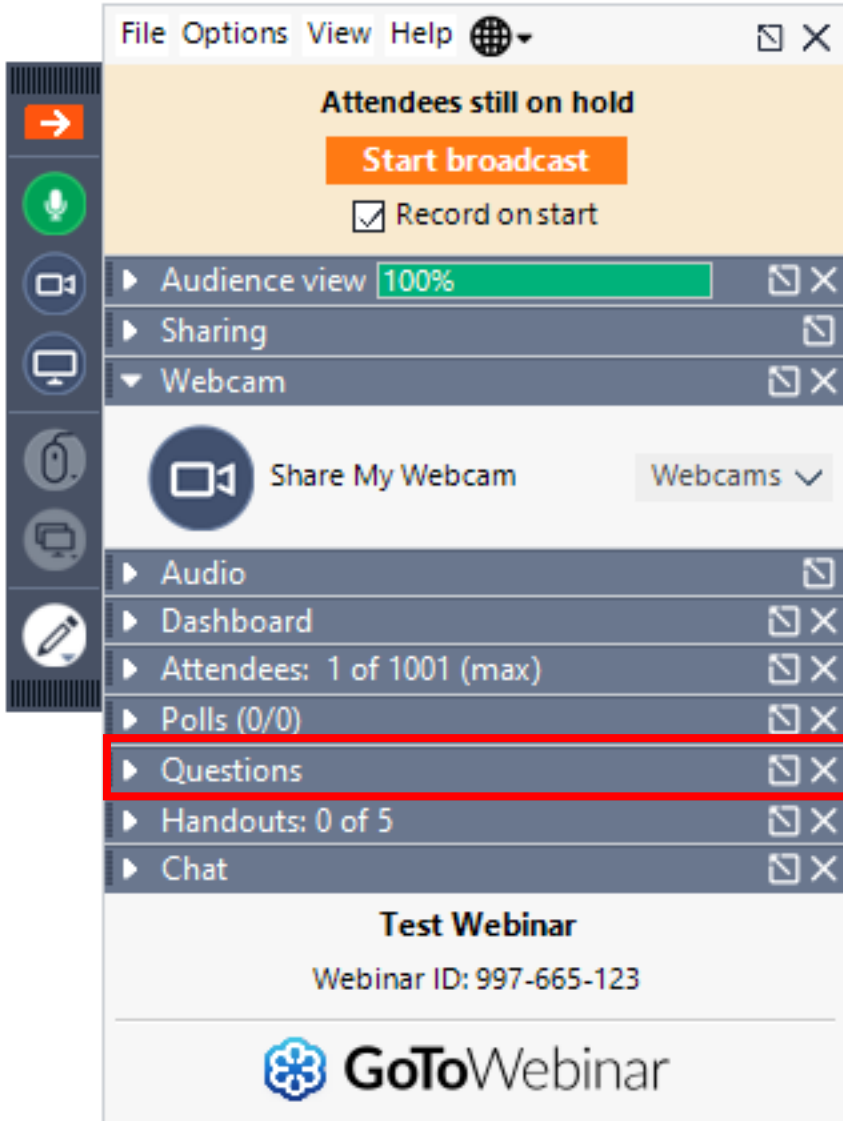
# Objectives

- Contextualizing PCORI's mission and role in the health ecosystem
- Sharing PCORI's newly proposed National Priorities for Health
- Supporting public awareness of opportunities for input on the National Priorities and Research Agenda

# Participants May Submit Comments

While today's webinar does not include a live Q & A, participants may use the **Questions** section to submit additional inputs or questions for PCORI consideration.

1. Open the Questions section in the side panel
2. Type your message and click send



# About the Patient-Centered Outcomes Research Institute (PCORI)

---

Kristin L. Carman, PhD, MA

Director, Public and Patient Engagement

# Our Mission



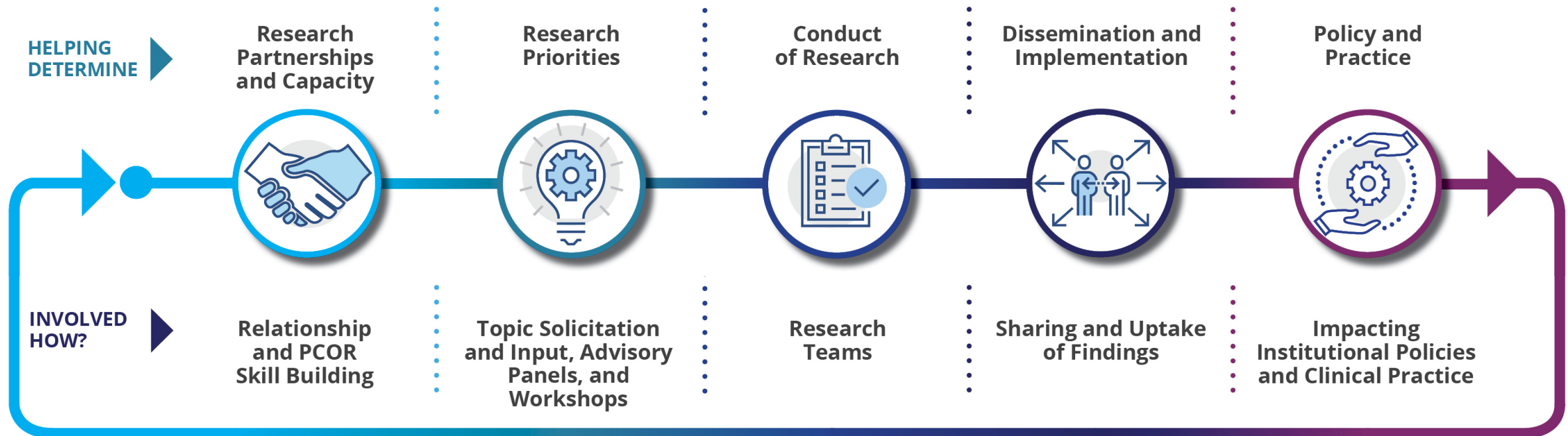
- Authorized by Congress in 2010, governed by healthcare stakeholders
- Funds comparative clinical effectiveness research engages patients and other stakeholders
- Answers real-world questions

PCORI helps people make informed healthcare decisions, and improves healthcare delivery and outcomes, by producing and promoting high-integrity, evidence-based information that comes from **research guided by patients, caregivers, and the broader healthcare community.**

# Research Done Differently

## Engagement in Research

### PATIENTS AND OTHER STAKEHOLDERS ARE INVOLVED IN...





# Our Accomplishments

## Funding and Impact



**AS OF MARCH 2021,  
PCORI HAS COMMITTED**

**MORE THAN**

**\$2.9 BILLION**

**TO FUND NEARLY**

**1,800**

**RESEARCH, DISSEMINATION  
& IMPLEMENTATION and  
ENGAGEMENT PROJECTS**

FUNDED PROJECTS BY AREA



**78%** \$2.1 Billion  
**COMPARATIVE CLINICAL  
EFFECTIVENESS RESEARCH**

**16%** \$434 Million  
**INFRASTRUCTURE  
(INCLUDING PCORNET)**

**6%** \$149 Million  
**METHODOLOGY**

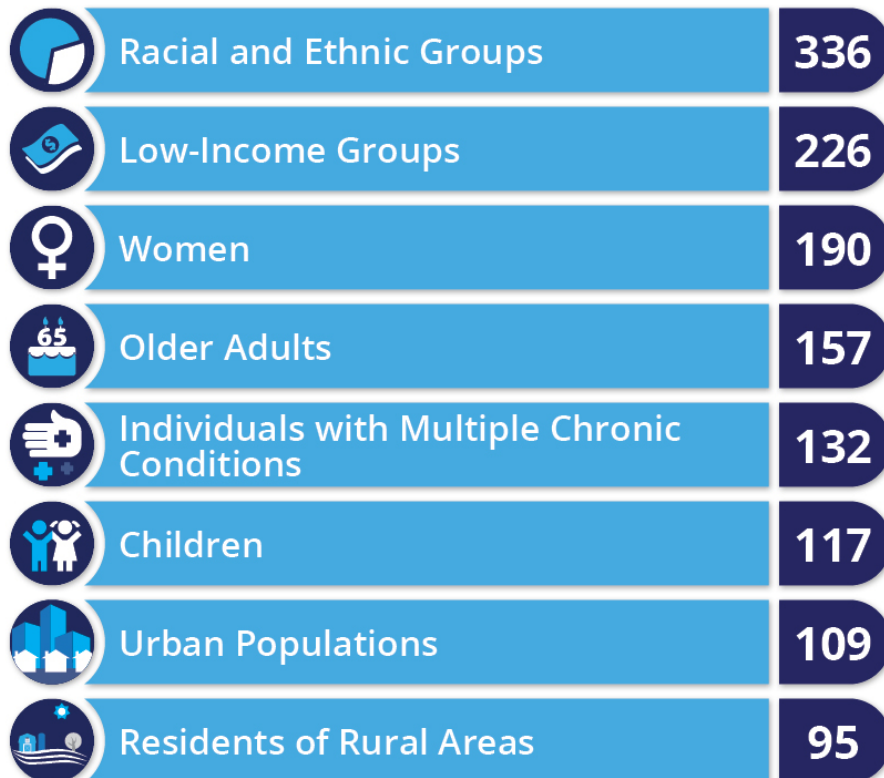
*As of March 2021*



# PCORI-Funded CER Projects: *Conditions and Populations of Interest*

## POPULATIONS OF INTEREST

Number of Projects: 531 Total



*A project may address more than one population of interest.*

*As of March 2021*

## MOST STUDIED CONDITIONS

Number of Projects: 531 Total



*A project may address more than one condition.*

*As of March 2021*

# PCORI's Strategic Planning

---

Overview of Proposed National Priorities and  
Research Agenda Framework

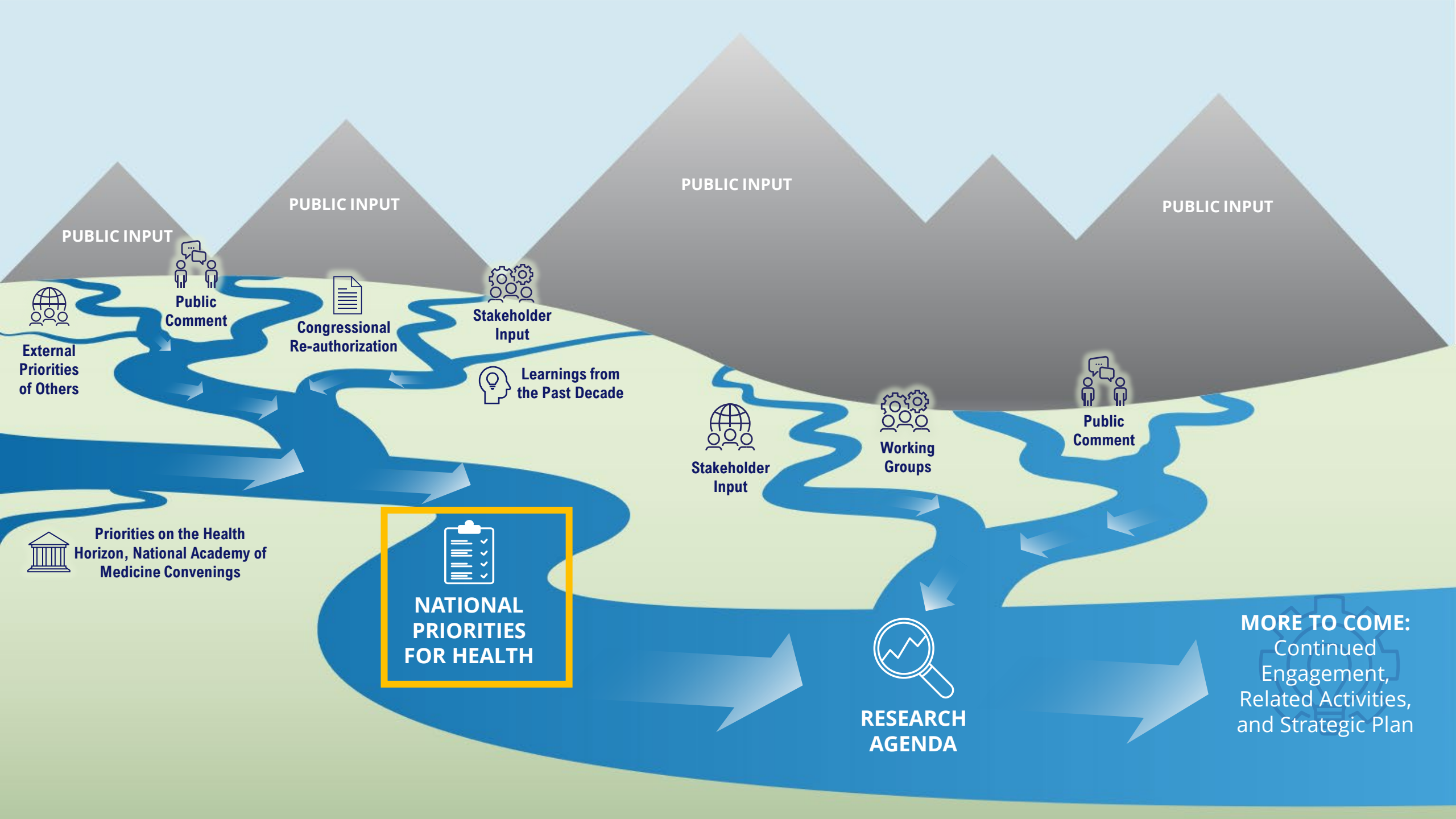
Nakela L. Cook, MD, MPH

Executive Director, PCORI

# Revised Strategic Framework

## Evolving to National Priorities for Health





# Stakeholder and Public Input Informs PCORI's National Priorities and Research Agenda



# Developing National Priorities for Health

- The themes below resulted from across the inputs
- At its April 2021, meeting, PCORI Board of Governors supported developing and further shaping these themes for National Priorities for Health

**Health Equity**

**Emerging Innovations**

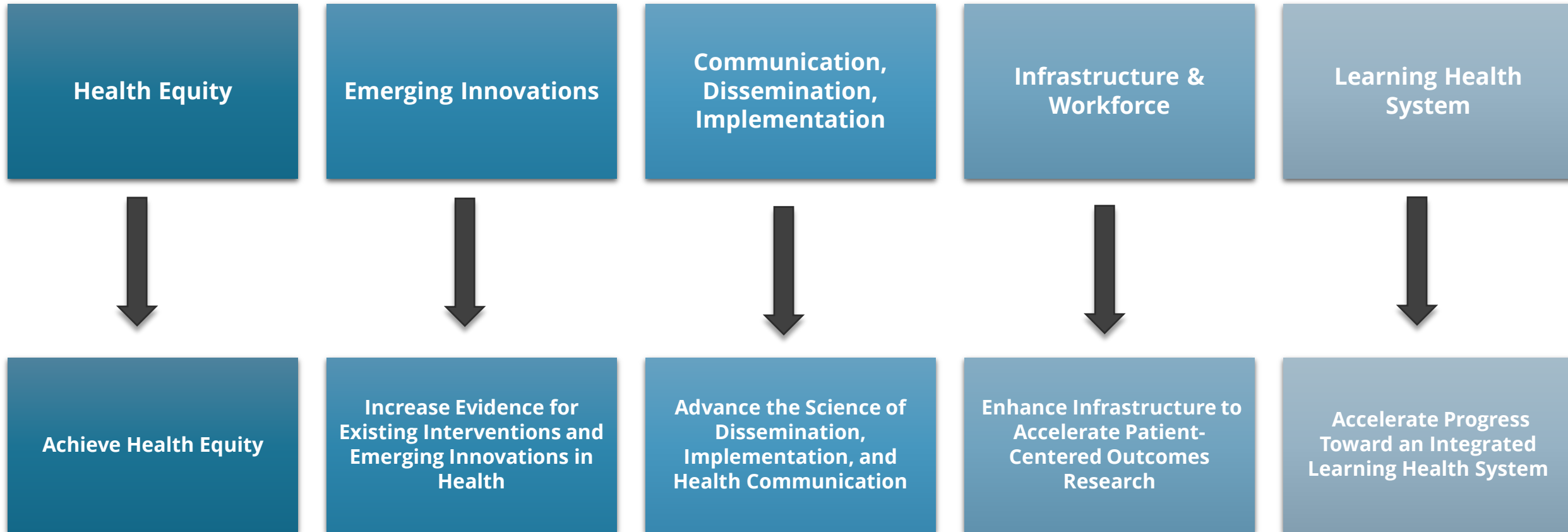
**Communication,  
Dissemination,  
Implementation**

**Infrastructure &  
Workforce**

**Learning Health  
System**

# Going from Themes to National Priorities

## Themes

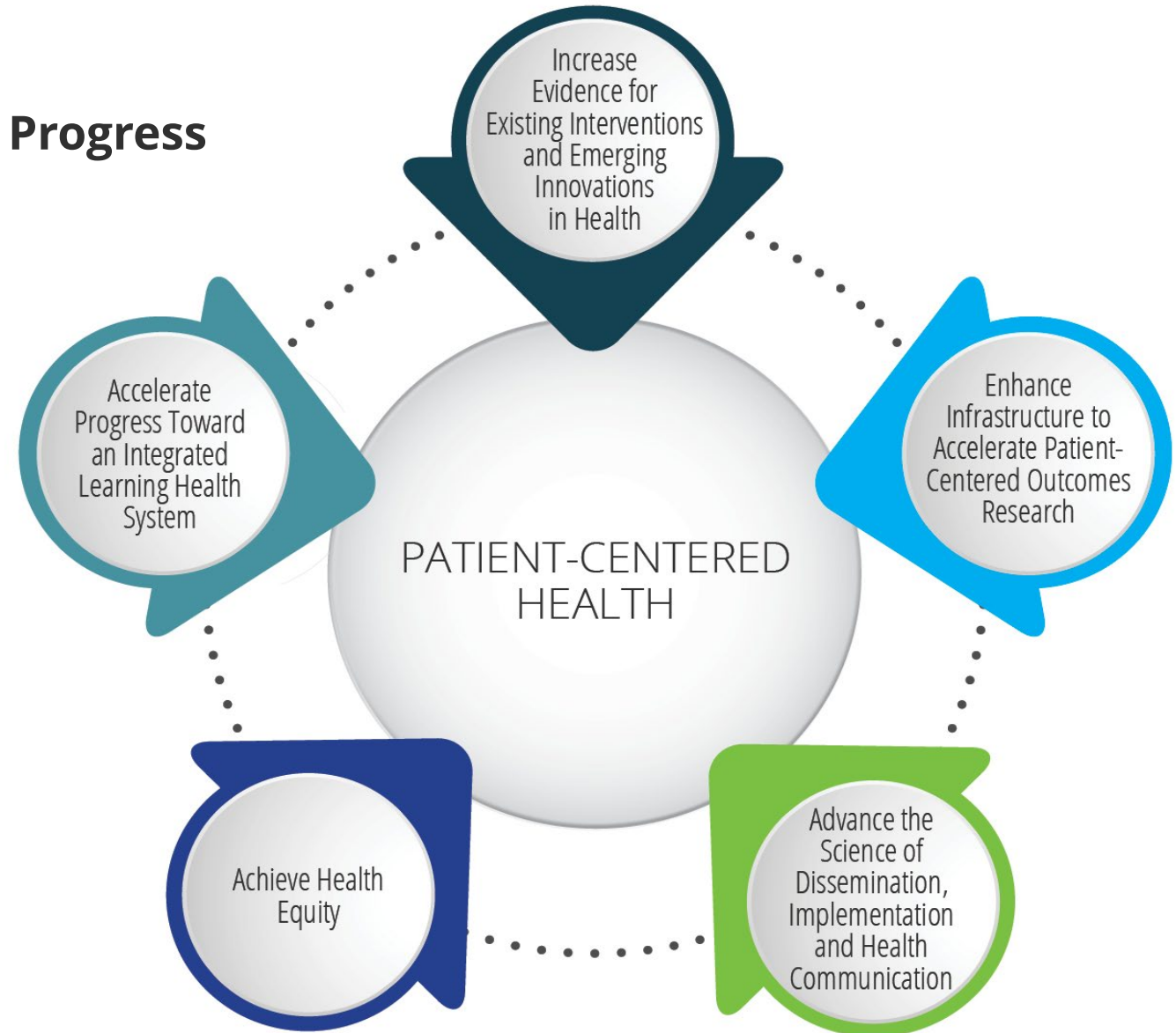


## Proposed National Priorities for Health



# Proposed National Priorities for Health

## Creating Synergistic Opportunities for Progress



# Proposed National Priorities for Health

Increase Evidence for Existing Interventions and  
Emerging Innovations in Health



*Strengthen and expand ongoing comparative clinical effectiveness research focused on both existing interventions and emerging innovations to improve healthcare practice, health outcomes, and health equity*

# Proposed National Priorities for Health

## Increase Evidence for Existing Interventions and Emerging Innovations in Health



### **Strategies to address this priority include:**

- monitor the research landscape for potentially high impact innovations
- evaluate existing and emerging innovations in clinical care interventions, systems changes, healthcare delivery, technologies, public health, and social determinants of health
- study unintended consequences, adverse events, barriers to care, burdens and economic impacts, and widened disparities in care outcomes associated with existing and emerging innovations
- expand scope of stakeholders engaged in PCORI's work from topic inception through implementation of the results
- emphasize inclusion of populations who are underserved, under-represented, and disadvantaged in CER research
- support CER of evidence gaps in diverse populations, geographic areas, and settings to foster equitable uptake practices

# Proposed National Priorities for Health

Enhance Infrastructure to Accelerate Patient-Centered Outcomes Research



*Enhance the infrastructure that facilitates patient-centered outcomes research to drive lasting improvements in health and transformation of both the research enterprise and care delivery*

# Proposed National Priorities for Health

## Enhance Infrastructure to Accelerate Patient-Centered Outcomes Research



### Strategies to address this priority include:

- develop and expand the universe of engaged patients and communities and representative leadership, research workforce, and clinician partners
- advance the accessibility and utilization of real-world data
- build synergies and leverage current work within health systems and by stakeholders
- integrate patient-centered outcomes research findings into learning health systems

# Proposed National Priorities for Health

Advance the Science of Dissemination, Implementation,  
and Health Communication



*Advance the scientific evidence for and the practice of  
dissemination, implementation, and health communication  
to accelerate the movement of comparative clinical  
effectiveness research results into practice*

# Proposed National Priorities for Health

Advance the Science of Dissemination, Implementation, and Health Communication



## Strategies to address this priority include:

- fund CER studies of delivery or implementation strategies
- communicate research findings effectively and in ways tailored to diverse audiences
- actively deliver information to targeted audiences to use to inform healthcare discussions and decisions
- promote the uptake of research findings into practice, to contribute to improved healthcare and health
- engage stakeholders and communities in strategic partnerships across diverse settings to improve the uptake of evidence



# Proposed National Priorities for Health

Achieve Health Equity



*Expand stakeholder engagement, research, and dissemination approaches that lead to continued progress towards achieving health equity in the United States*

# Proposed National Priorities for Health

## Achieve Health Equity



### **Strategies to address this priority include:**

- fund CER to improve health outcomes for individuals of all backgrounds
- strengthen efforts to support inclusive and diverse stakeholder engagement
- disseminate and implement research findings with the intention of informing broader health equity strategies
- collaborate with health, research, advocacy, social service, educational, and other organizations to reduce health inequities
- identify and fund novel ways to support the professional development and increase the engagement of investigators of color, investigators with disabilities, and populations who are historically under-represented in research endeavors

# Proposed National Priorities for Health

Accelerate Progress Toward an  
Integrated Learning Health System



*Foster actionable, timely, place-based, and transformative improvements in patient-centered experiences, care provision, and ultimately improved health outcomes through collaborative, multisectoral research to support a health system that serves the needs and preferences of individuals*

# Proposed National Priorities for Health

## Accelerate Progress Toward an Integrated Learning Health System



### Strategies to address this priority include:

- fund multi-sector interventional CER focused on health outcomes and grounded in the context of specific settings, communities, and needs
- implement research on precision and personalized medicine and whole-person health into practice
- incorporate the full range of outcomes to influence value that encompasses diverse outcomes and perspectives among patients, families, caregivers, and providers
- formalize partnerships to ensure an integrated learning health system that meets the needs of patients and caregivers
- use data analytic and informatic tools to inform and enable real-time decision making

# Opportunities to Engage

---

Andrew Hu, MPP

Director, Public Policy and Government Relations

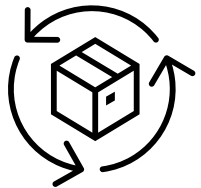
# Seeking Public Input



**Proposed National Priorities for Health**

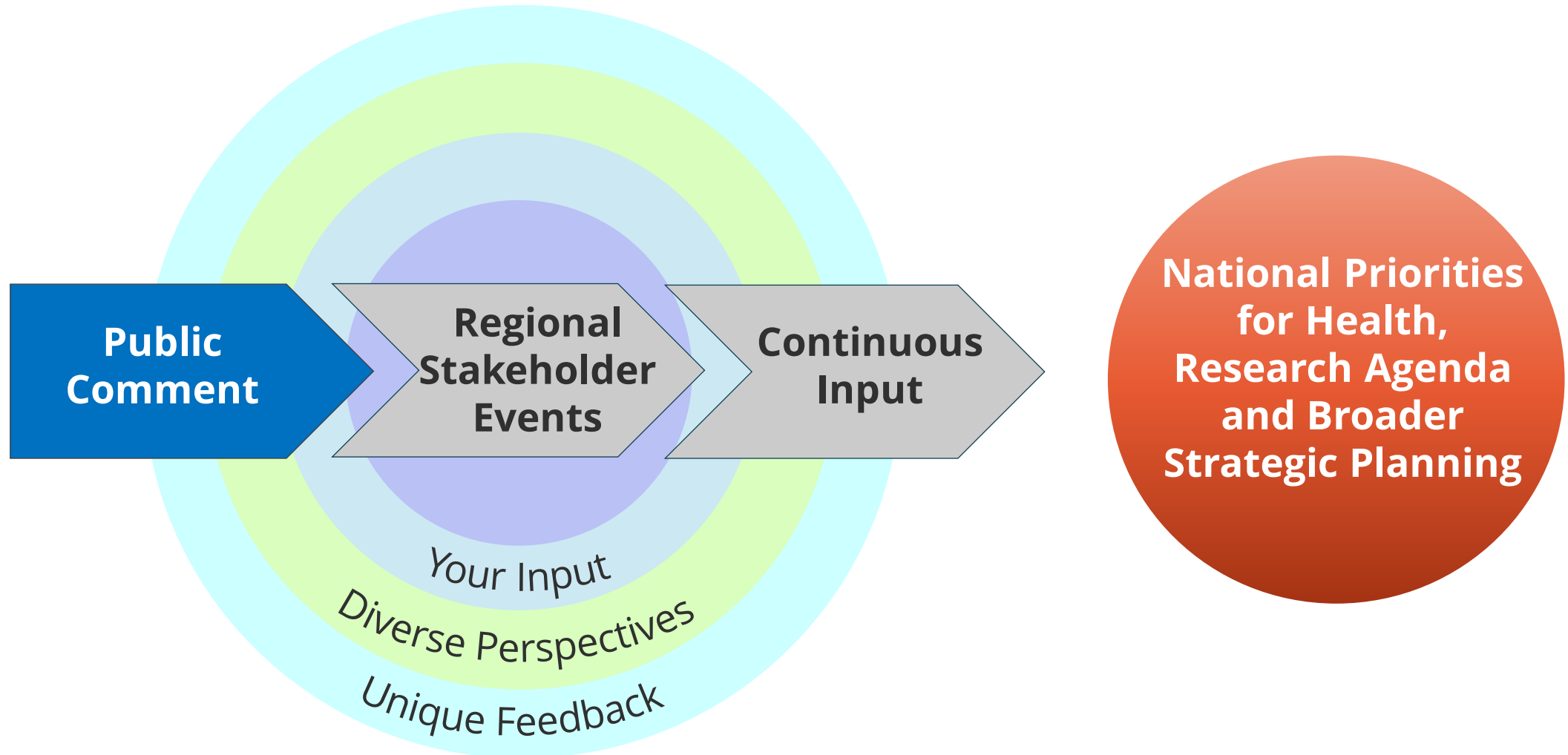


Upcoming Research Agenda



Broader Strategic Planning

# Ways to Share Input and Feedback





# Public Comment Period

- Proposed National Priorities for Health
- [Submit comments](#) during PCORI's 60-Day Public Comment Period (**June 28 – August 27**)
- [pcori.org/nationalprioritiesforhealth](http://pcori.org/nationalprioritiesforhealth)



# Regional Stakeholder Events

- Three Regional Events throughout August – October
  - West Virginia
  - Colorado
  - Maryland
- Partnering with community leaders, these events are an opportunity to engage new patient and stakeholder audiences and gather unique and diverse perspectives.



# Informing PCORI's Strategic Plan



From start to finish, we want our broader **Strategic Planning** efforts informed by you!

## SCOPE OF STRATEGIC PLANNING ACTIVITIES



# Thank You

---