

# ADVISORY PANEL ON PATIENT ENGAGEMENT MEETING

---

*Via GoToWebinar*

*Fall 2020 Meeting - Day One*  
October 22, 11:30am-3:30pm EDT

# Welcome

---

Kristin L. Carman

Director, Public and Patient Engagement

Gwen Darien

Chair, Advisory Panel on Patient Engagement



# Agenda: Day One



## **Part I (EDT):**

- 11:30 AM – Welcome and Roll Call
- 11:50 AM – PCORI Strategic Updates
  - Strategic Planning, Identifying National Priorities
  - PCORI's Mandated Research Priorities
- 12:50 AM – 2020 PCORI Virtual Annual Meeting: Post-Meeting Report
- 1:20 PM – Break

## **Part 2 (EDT):**

- 1:50 PM – Principles for the Consideration of the Full Range of Outcomes Data
- 2:20 PM – Engagement Awards Update: Bringing New Organizations to the Table
- 2:50 PM – Sustaining Engagement during the Pandemic: Sharing Novel Approaches
- 3:30 PM – Meeting Adjourned

# Housekeeping

- Meeting is available to the public and is being recorded
- Members of the public are invited to listen to this teleconference and view the webinar
- No public comment period is scheduled
- A meeting summary and materials will be made available on PCORI's website following the meeting
- Visit [www.pcori.org/events](http://www.pcori.org/events) for more information on future activities

# GoToWebinar Housekeeping



- Attendees are in listen-only mode
- Submitting questions/comments (PCORI PEAP)
  - Type "I have a question/comment"
- Panelists (PCORI PEAP) can mute/unmute themselves
  - Please keep yourself on mute when not talking
- If you need to leave the meeting early, please send Lisa a note so we aren't concerned that you are having connectivity issues

# How to Ask Questions – Panelist Instructions

You are muted



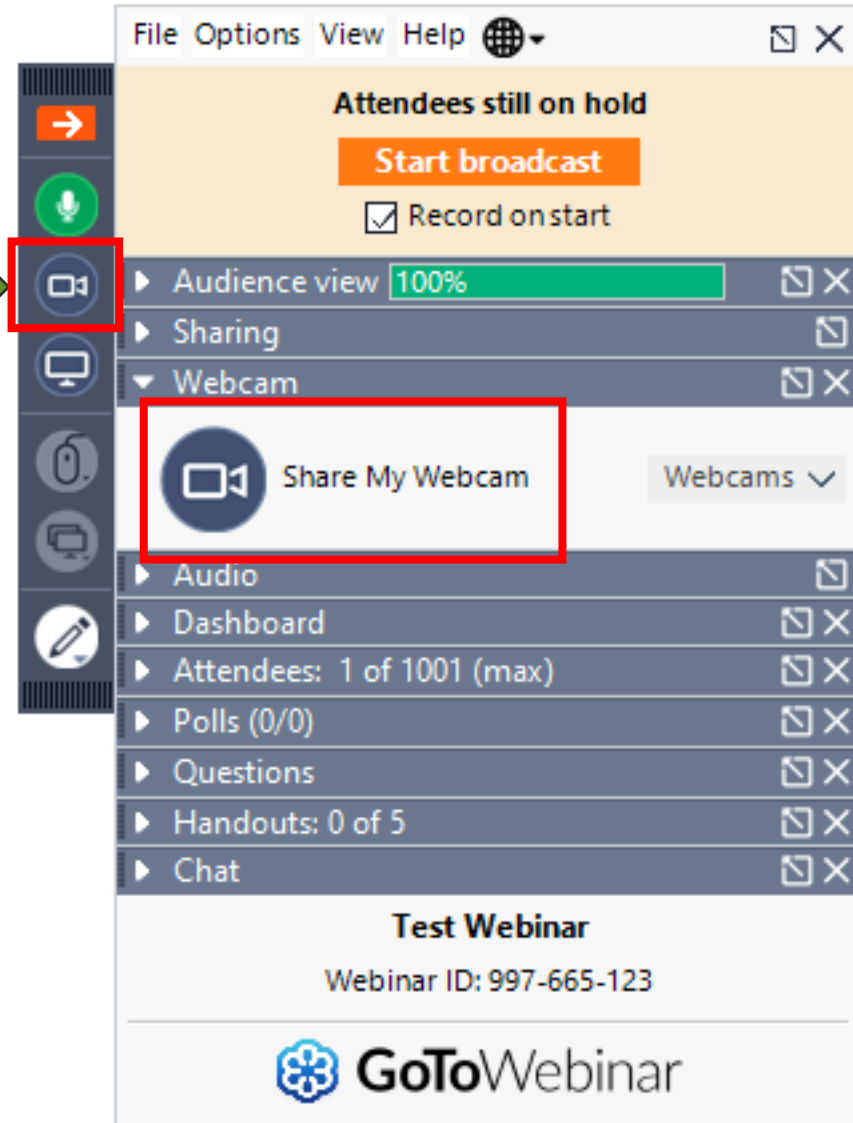
Type "I have a comment"  
in the chat box



The screenshot shows the GoToWebinar interface. At the top, there's a menu bar with 'File', 'Options', 'View', and 'Help'. Below the menu, a status bar indicates 'Attendees still on hold' and a 'Start broadcast' button. A list of controls is visible on the left, including 'Audience view' (100%), 'Sharing', 'Webcam', 'Audio', 'Dashboard', 'Attendees: 1 of 1001 (max)', 'Polls (0/0)', 'Questions', 'Handouts: 0 of 5', and 'Chat'. The 'Chat' section is expanded, showing a text input field with the placeholder '[Type message here]' highlighted by a red rectangle. Below the input field, there's a 'To:' dropdown menu set to 'All - Entire Audience' and a 'Send' button. At the bottom, the session title 'PEAP Tech Session #1' and 'Webinar ID: 149-787-971' are displayed, along with the GoToWebinar logo.

# How to Turn on Your Webcam – Panelist Instructions

Click to turn webcam on/off. Icon is green when on.



# The PCORI PEAP Team



Kristin Carman  
Director,  
Public and Patient  
Engagement



Lisa Stewart  
Senior Engagement Officer,  
Public and Patient  
Engagement



Meghan Berman  
Program Associate,  
Public and Patient  
Engagement



Aleksandra Modrow  
Senior Administrative  
Assistant,  
Public and Patient  
Engagement



# PEAP Chair and Co-chair



Gwen Darien  
**Chair**

Executive Vice President, Patient Advocacy

Patient Advocate Foundation

*Representing: Patients, Caregivers, and  
Patient Advocates*



Neely Williams  
**Co-chair**

Administrator

Community Partners' Network, Inc.

*Representing: Patients, Caregivers, and  
Patient Advocates*

# Thank you, Danny!



**Danny van Leeuwen**  
Representing: Patients/Consumers

## Welcome new and reappointed board members!

[GAO announces seven new appointments to PCORI Board of Governors](#)

- **Kate Berry**
- **Tanisha Carino**
- **James Huffman**
- **Connie Hwang**
- **Barbara McNeil** (*Reappointed*)
- **Eboni Price-Haywood**
- **James Schuster**
- **Danny van Leeuwen**

# Welcome New Members!



**Karen Fortuna**

Assistant Professor of Psychiatry, Geisel  
School of Medicine, Dartmouth  
University

Representing: Researchers

*Nashua, NH*



**Margarita Holguin**

Founder and CEO, Consulting  
Solutions Team, LLC

Representing: Patients, Caregivers,  
and Patient Advocates

*Bonita, CA*



**Alma McCormick**

Executive Director, Messengers for  
Health

Representing: Patients, Caregivers,  
and Patient Advocates

*Hardin, MT*



**Al Richmond**

Executive Director, Community Campus  
Partnerships for Health

Representing: Patients, Caregivers, and  
Patient Advocates

*Raleigh, NC*

# Roll Call - Advisory Panel Members



**Jennifer Canvasser**  
*Patients, Caregivers,  
and Advocacy  
Organizations*



**Beth Careyva**  
*Researchers*



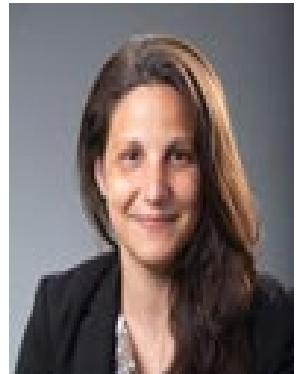
**Tracy Carney**  
*Patients, Caregivers,  
and Advocacy  
Organizations*



**Gwen Darien**  
*Patients, Caregivers,  
and Advocacy  
Organizations*



**Sarah Donelson**  
*Industry*



**Karen L. Fortuna**  
*Researchers*



**Maureen Fagan**  
*Clinicians*



**Marilyn Geller**  
*Patients, Caregivers,  
and Advocacy  
Organizations*



**Crispin Goytia**  
*Patients, Caregivers,  
and Advocacy  
Organizations*



**James Harrison**  
*Researchers*



# Roll Call - Advisory Panel Members



**Jill Harrison**  
*Patients, Caregivers,  
and Advocacy  
Organizations*



**Margarita Holguin**  
*Patients, Caregivers,  
and Advocacy  
Organizations*



**Matthew Hudson**  
*Patients, Caregivers,  
and Advocacy  
Organizations*



**Simon Mathews**  
*Clinicians*



**Alma McCormick**  
*Patients, Caregivers,  
and Advocacy  
Organizations*



**Al Richmond**  
*Patients, Caregivers,  
and Advocacy  
Organizations*



**Anita Roach**  
*Patients, Caregivers,  
and Advocacy  
Organizations*



**Umair Shah**  
*Policy Makers*



**Sandy Sufian**  
*Patients, Caregivers,  
and Advocacy  
Organizations*



**Neely Williams**  
*Patients, Caregivers,  
and Advocacy  
Organizations*

# How to Use Padlet

padlet

Meghan Berman • 1m

## October PEAP Meeting

Please use this space to capture any thoughts or questions that you weren't able to vocalize during the meeting.

Director's Update, Public and Patient Engagement

2020 PCORI Virtual Annual Meeting: Post-Meeting Report

Principles for the Consideration of the Full Range of Outcomes Data

Trust and Trustworthiness of Organizations: Practical Strategies for PCORI to Consider

ADD COLUMN

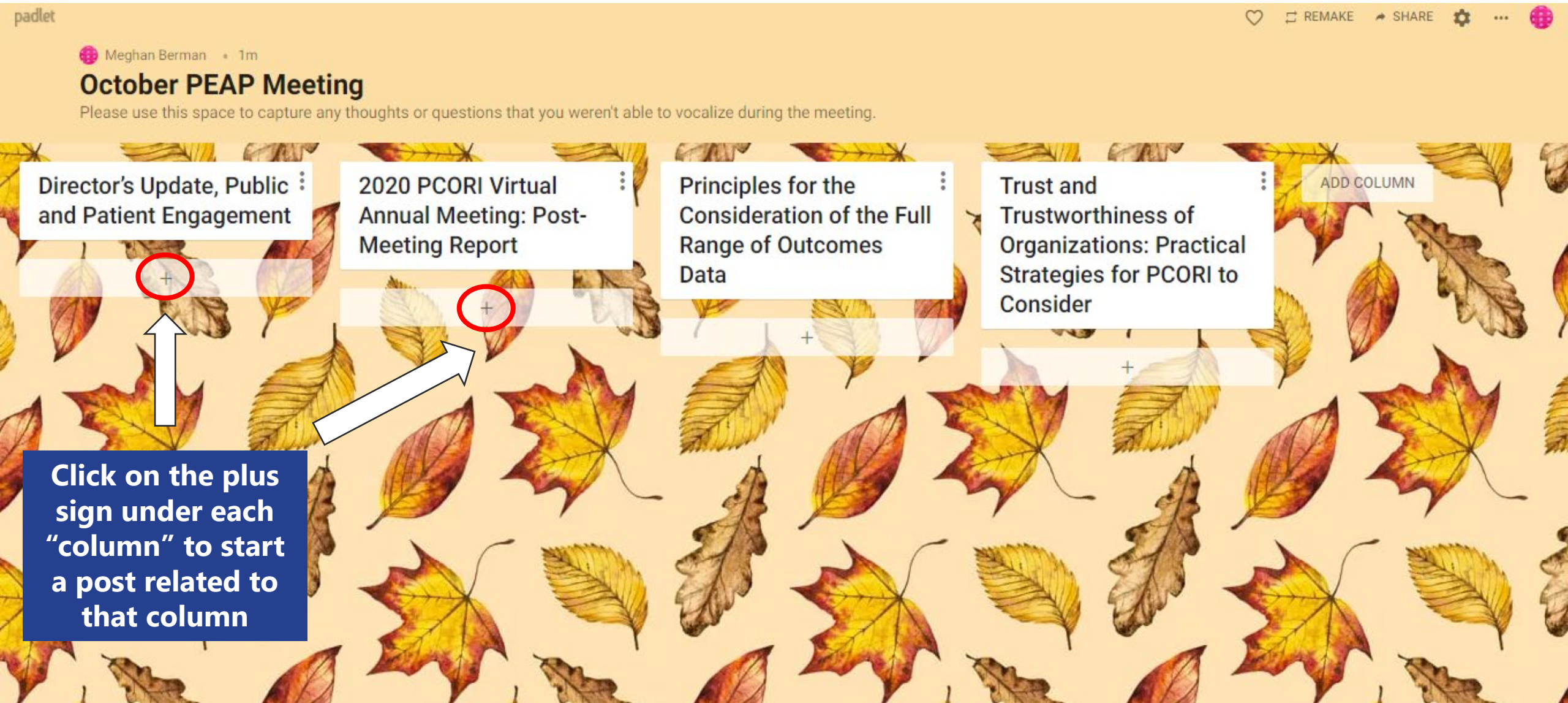
+

+

+

+

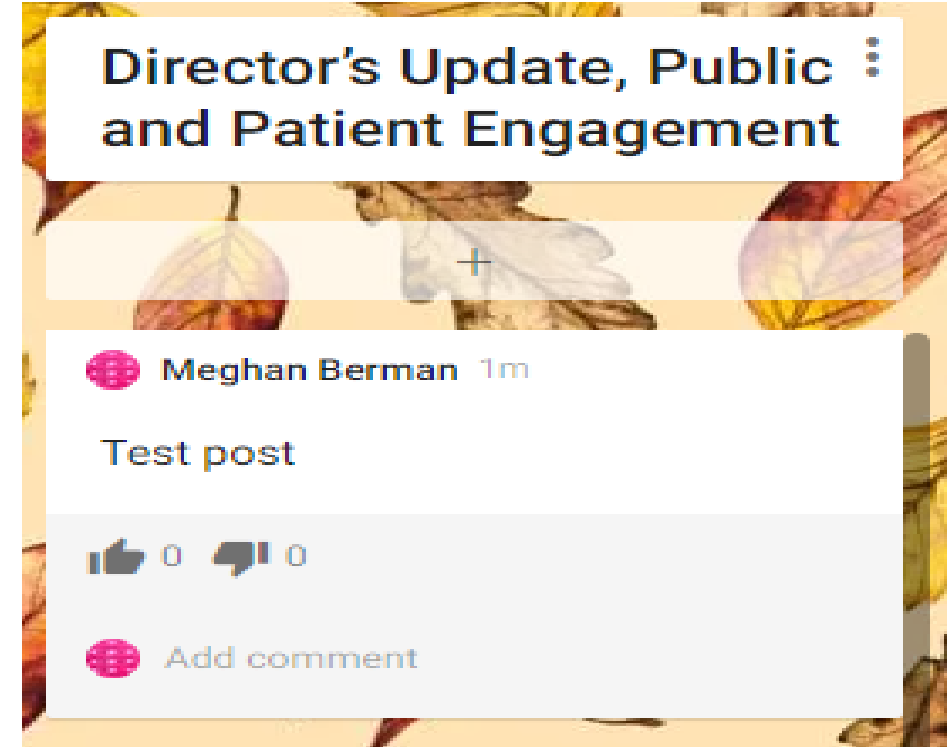
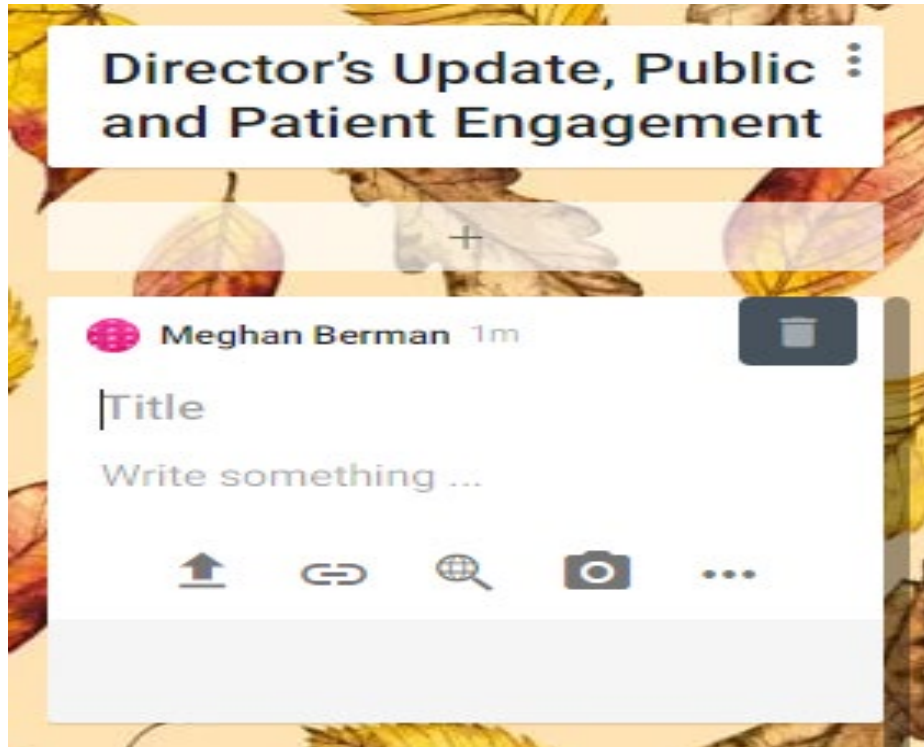
Click on the plus sign under each "column" to start a post related to that column

The image shows a Padlet board interface with a background of autumn leaves. At the top, the Padlet logo is on the left, and navigation icons (heart, remake, share, settings, etc.) are on the right. Below the header, the board is titled 'October PEAP Meeting' by 'Meghan Berman' from '1m' ago. A subtitle reads: 'Please use this space to capture any thoughts or questions that you weren't able to vocalize during the meeting.' The board contains four columns, each with a title and a plus sign below it. The first column is titled 'Director's Update, Public and Patient Engagement'. The second is '2020 PCORI Virtual Annual Meeting: Post-Meeting Report'. The third is 'Principles for the Consideration of the Full Range of Outcomes Data'. The fourth is 'Trust and Trustworthiness of Organizations: Practical Strategies for PCORI to Consider'. A button labeled 'ADD COLUMN' is to the right of the fourth column. Below the first two columns, there are two white arrows pointing to the plus signs. A blue text box at the bottom left contains the instruction: 'Click on the plus sign under each "column" to start a post related to that column'.



# How to Use Padlet

- When writing a post, please make the title your first name, then write your comment in the space below. You can also upload files, links, and photographs.
- You can like posts by clicking on the thumb.
- Navigate here for additional support: <https://padlet.com/support>



# PCORI Strategic Updates

---

## **Strategic Planning: Identifying National Priorities**

Jean Slutsky, Chief Engagement and Dissemination Officer

## **PCORI's Mandated Research Priorities**

Emma Kopleff, Program Officer, Public and Patient Engagement

Caitlin McCormick, Associate Director, Public Policy



1.

---

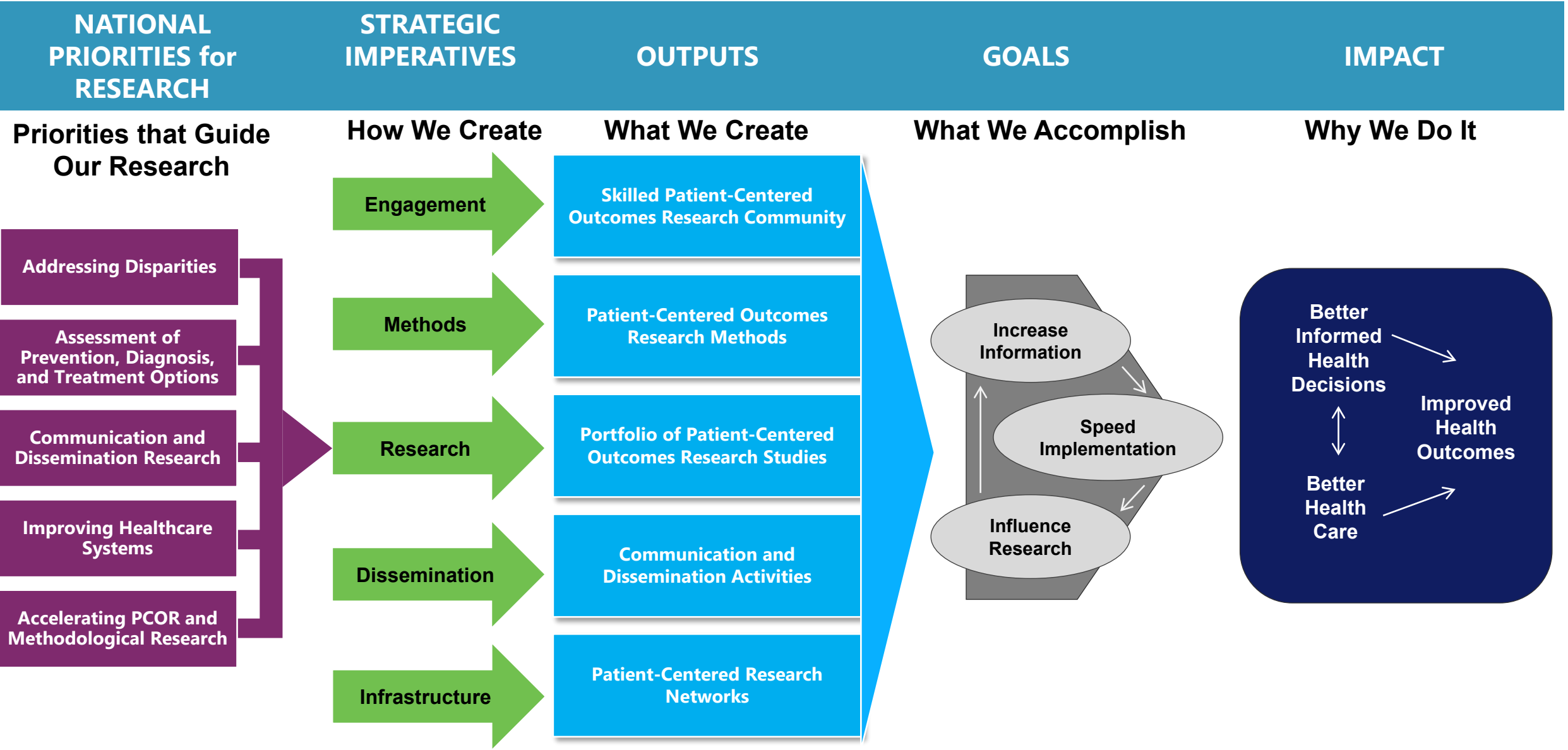
## Strategic Planning: Identifying National Priorities

Jean Slutsky

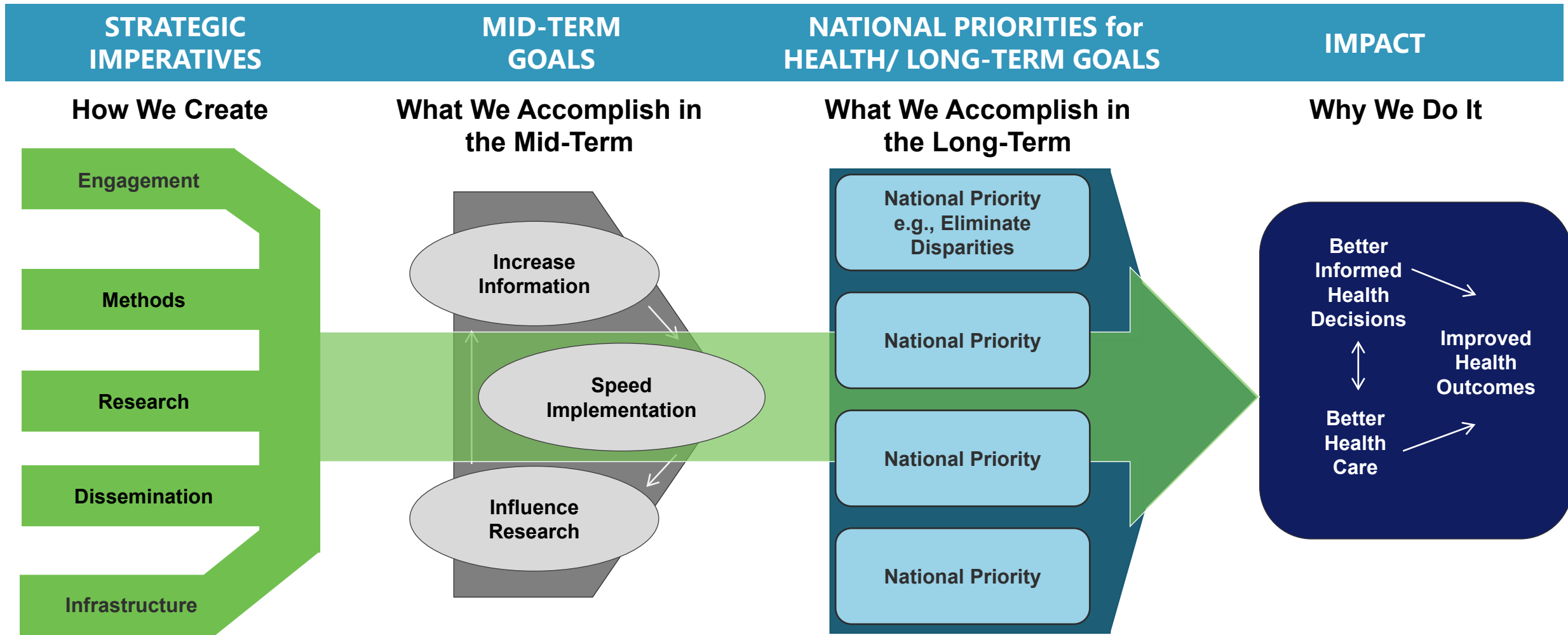
Chief Engagement and Dissemination Officer



# Original Strategic Framework (2013)



# Revised Strategic Framework



# Legislatively-Mandated Priority Topics Cut Across Our National Priorities



|   | National Priority | National Priority | National Priority |
|---|-------------------|-------------------|-------------------|
| Intellectual and Developmental Disabilities | A1                | B1                | C1                |
| Maternal Morbidity and Mortality            | A2                | B2                | C2                |

Intellectual and developmental disabilities and maternal morbidity and mortality:  
Priority topics for the next 10 years

# Existing National Priorities Adopted in 2012

## Addressing Disparities

Identifying potential differences in prevention, diagnosis, or treatment effectiveness, or preferred clinical outcomes across patient populations and the healthcare required to achieve best outcomes in each population.

## Assessment of Prevention, Diagnosis, and Treatment Options

Comparing the effectiveness and safety of alternative prevention, diagnosis, and treatment options to see which ones work best for different people with a particular health problem.

## Communication and Dissemination Research

Comparing approaches to providing comparative effectiveness research information, empowering people to ask for and use the information, and supporting shared decision making between patients and their providers.

## Improving Healthcare Systems

Comparing health system-level approaches to improving access, supporting patient self-care, innovative use of health information technology, coordinating care for complex conditions, and deploying workforce effectively.

## Accelerating PCOR and Methodological Research

Improving the nation's capacity to conduct patient-centered outcomes research, by building data infrastructure, improving analytic methods, and training researchers, patients, and other stakeholders to participate in this research.

# Where Do We Go From Here

## Addressing Disparities (AD)

### Description

Identifying potential differences in prevention, diagnosis, or treatment effectiveness, or preferred clinical outcomes across patient populations and the healthcare required to achieve best outcomes in each population.

### What we've been hearing about this Priority

- Remains more important than ever
- Needs to be strengthened (e.g., eliminate disparities rather than addressing)

### We want to hear from you

- What does the reframing of the National Priorities from categories of research to goals for health mean for the AD priority?

# Where Do We Go From Here

Assessment of Prevention, Diagnosis, and Treatment Options (APDTO)



## Description

Comparing the effectiveness and safety of alternative prevention, diagnosis, and treatment options to see which ones work best for different people with a particular health problem.

## What we've been hearing about this Priority

- Importance of prevention and its link to broader public health
- Incorporate the relationships between how individuals live, work, and play and the public health system with priority

## We want to hear from you

- What does the reframing of the National Priorities from categories of research to goals for health mean for the APDTO priority?

# Where Do We Go From Here

## Communication and Dissemination Research (CDR)

### Description

Comparing approaches to providing comparative effectiveness research information, empowering people to ask for and use the information, and supporting shared decision making between patients and their providers.

### What we've been hearing about this Priority

- Importance of doing communication and dissemination, not just the research of it
- Community engagement can facilitate strong dissemination

### We want to hear from you

- What does the reframing of the National Priorities from categories of research to goals for health mean for the CDR priority?



# Where Do We Go From Here

## Improving Healthcare Systems (IHS)

### Description

Comparing health system–level approaches to improving access, supporting patient self-care, innovative use of health information technology, coordinating care for complex conditions, and deploying workforce effectively.

### What we've been hearing about this Priority

- Reflect intersection of priority with broader public health ecosystem (e.g., social determinants of health)

### We want to hear from you

- What does the reframing of the National Priorities from categories of research to goals for health mean for the IHS priority?

# Where Do We Go From Here

## Accelerating PCOR and Methodological Research (Methods)



### Description

Improving the nation's capacity to conduct patient-centered outcomes research, by building data infrastructure, improving analytic methods, and training researchers, patients, and other stakeholders to participate in this research.

### What we've been hearing about this Priority

- Consider infrastructure needed to support the other priorities
- Data infrastructure ecosystem could lead to efforts that complement PCORI's work
- Emphasize human component of infrastructure
  - Capacity building to include diverse participants in research
  - Development of a research pipeline for PCOR

### We want to hear from you

- What does the reframing of the National Priorities from categories of research to goals for health mean for the Methods priority?

# Is Anything Missing?

Looking at all the existing National Priorities and considering the revised framework,

- Is there an important goal for health that is not reflected in the National Priorities?

2.

---

## **An Update on PCORI's Mandated Research Priorities**

Emma Kopleff

Program Officer, Public and Patient Engagement

Caitlin McCormick

Associate Director, Public Policy



# Putting our Mandate into Action

- Reauthorization language identified two research priorities:
  - Maternal morbidity and mortality (MMM)
  - Intellectual and/or developmental disabilities (IDD)
- Implementation of mandate will include:
  - Long-term priority areas of investment
  - Ongoing opportunities for engagement

## Hear from Dr. Nakela Cook in her recent blog

### Formulating Our Approach to New Priority Research Areas

**Date:** September 8, 2020

**Blog Topics:** [Executive Director's Blogs](#),  
[Funding Awards](#),  
[Research](#)

As part of last winter's legislation that reauthorized PCORI's funding for 10 years, Congress included two new research priority areas for PCORI to address: strategies for improving maternal mortality, and improving health for individuals with intellectual and/or developmental disabilities (IDD).

These areas are of critical importance for PCORI given the long-standing health challenges faced by those affected and the opportunities that PCORI's approach to *research done differently* can contribute to meaningful health improvements. We are committed to a multipronged approach to funding research to address a variety of issues related to these two topics over the next decade.

#### Addressing Maternal Morbidity and Mortality

The United States consistently ranks near the bottom among high-income



# Current and Near-Term Activities

**Stakeholder Engagement:** *Landscape review and information gathering (e.g., advisory panels, PCORI Board of Governors, preliminary key informant discussions, stakeholder surveys)*

## CURRENT FUNDING OPPORTUNITIES

- *Investigator-initiated proposals for CER with areas of special emphasis\**
- *Identified research priority for:*
  - *Phased Large Awards for CER*
  - *Engagement Awards areas of interest*

## NEAR-TERM OPPORTUNITIES FOR EVIDENCE SYNTHESIS

- *Systematic reviews*
- *Evidence maps and/or visualizations*

## ONGOING STRATEGIC PLANNING

- *Refreshing national priorities*
- *Developing topic pipeline and longer-term research agendas*
- *Engaging representative and diverse stakeholders*

\*Indicates dedicated funds specific to research priorities

# PCORI's Current Special Areas of Emphasis



Up to \$30 million set aside for **each** of these topics, with available funding emphasizing:

- Care and care transitions for individuals with intellectual and/or developmental disabilities growing into adulthood
- Person-centered maternal care for populations likely to experience the most significant disparities in care and/or outcomes

Please find additional details on the [PCORI website](#) and within the handout provided.

## Facilitating Engagement

- Building trust and promoting transparency
- Supporting diversity, equity and inclusion
- Adapting to a pandemic context
- Learning from and providing inputs to other PCORI activities (e.g., Engagement Rubric, principles for DEI)

## Refining Research Priorities

- Driven by stakeholders
- Aligning with new National Priorities
- Demonstrating PCORI's unique impact amidst other established activities in the field

- **How would PEAP like to be kept up to date and/or engaged in these activities around MMM and/or IDD?** (e.g., standing PEAP agenda item, periodic updates to subset of advisory panelists, representation at broader stakeholder convenings, etc)
- **Do you have ideas for mechanisms and/or venues for execution of these considerations?** (e.g., stakeholder surveys, small and interactive convenings, larger webinars, more “passive” communication channels, etc)



# Thank You!

---



# 2020 PCORI Virtual Annual Meeting

---

## Post Meeting Report

Tasha Parker  
Director, Communications

Amy Damsker-Wright  
Associate Director, Communications



# Who Attended?

2019

887

Researcher  
(44%)

Patients, Caregivers,  
Caregiver/Patient  
Advocacy Orgs (30%)

Clinician, Hospital/  
Health Systems,  
Training Insts.  
(16%)

Industry, Payer, Policy  
Maker, Purchaser  
(10%)

2020

2,306

Researcher  
(47%)

Patients, Caregivers,  
Caregiver/Patient  
Advocacy Orgs (21%)

Clinician, Hospital/  
Health Systems,  
Training Insts.  
(23%)

Industry, Payer, Policy  
Maker, Purchaser  
(8%)

Other (1%)

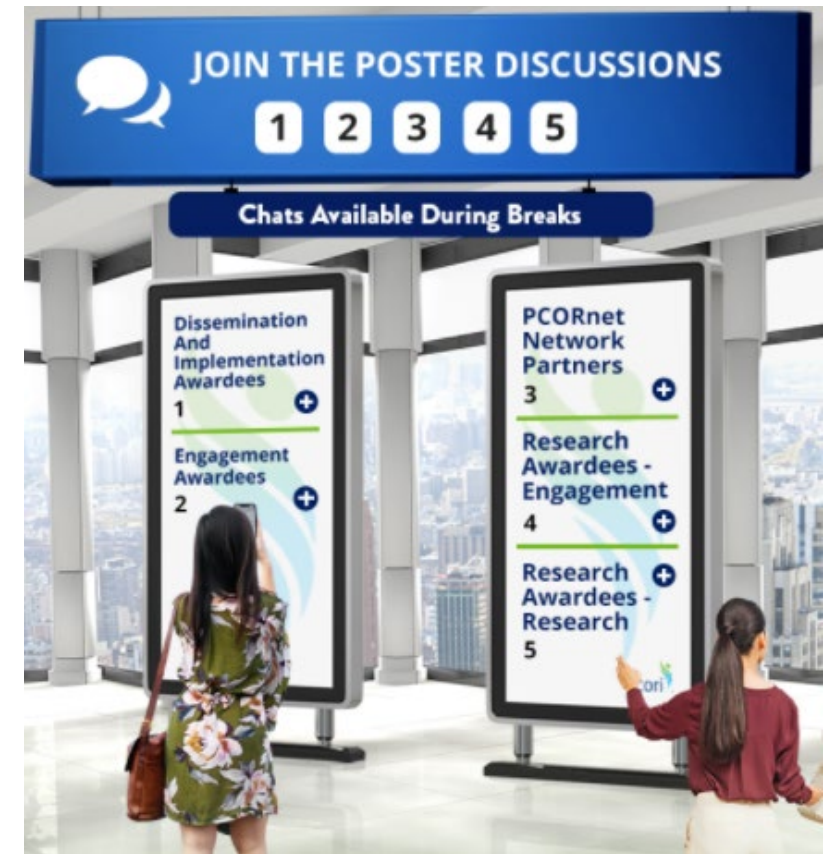
# Virtual Meeting Space

Average amount of time attendees were in the virtual space: 7 hours



# Engagement Opportunities

- Networking Lounge general chat and 8 topic-driven chats
- Padlet to provide input on PCORI's National priorities
- Attendee one-on-one chat between attendees
- Chat with poster presenters (44 posters)





# Engagement Opportunities

4 PCORI booths visited over 1,600 times with opportunity to talk with a representative



# Top Breakout Sessions

1. Disseminating & Implementing PCOR Evidence into Primary Care Practice Building on AHRQ's Experience
2. System Challenges to Inclusion of Vulnerable Populations in Pragmatic Trials
3. Patient-Centered Telehealth under the Coronavirus Pandemic
4. Building Effective Multi-Stakeholder Research Teams
5. Evidence for Dissemination Findings People Want to Know About



# Preliminary Attendee Survey Results



- 525 responses (23% response rate)
- > 85% of respondents agree that the Annual Meeting:
  - Provided information that will help make health care more effective and patient-centered
  - Promoted the use of research results
  - Demonstrated how engagement impacts research
- 95% of respondents indicated they were excited for PCORI's future
- Attrition survey respondents cited schedule conflict as the main reason for registering but not attending



# Discussion

- Patient inclusion and engagement
  - How did we do this year?
  - How can we improve next year?
- Do you have ideas on more engaging session formats?
- What are your thoughts on programming tracks?
  - Is there specific programming that would be of interest to the patient community?

# Questions

---



# Break

---

1:20 – 1:50pm EDT

# Update on PCORI's Proposed Principles for the Consideration of the Full Range of Outcomes

---

Andrew Hu  
Director, Public Policy

Joanna Siegel  
Director, Dissemination and Implementation



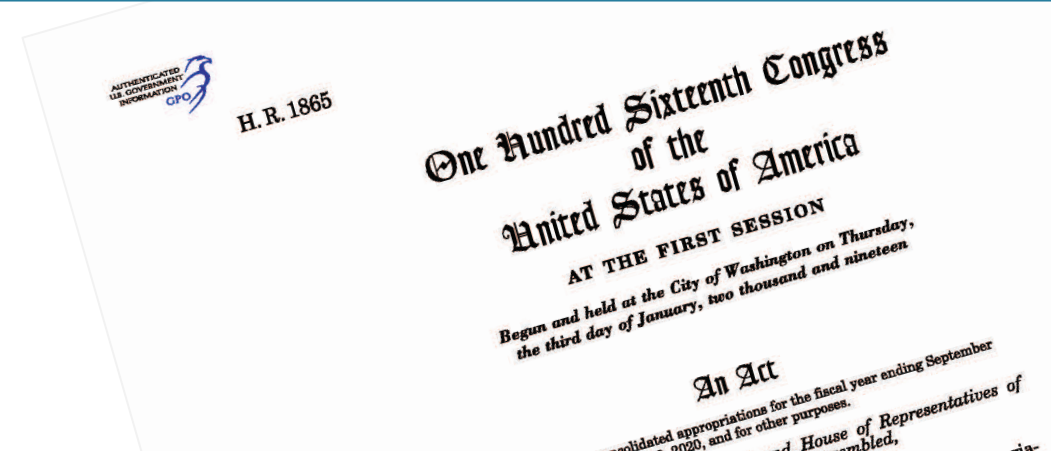
# Overview of New Statutory Authority

PCORI's reauthorizing legislation directs PCORI to capture, as appropriate, the full range of outcomes data in the course of our research studies.

This includes economic and cost data related to the utilization of health care services, but also outcomes and measures of cost and burden important to patients.

## Potential Burdens and Economic Impacts Include:

- Medical out-of-pocket costs, including health plan benefit and formulary design
- Non-medical costs to the patient and family, including caregiving
- Effects on future costs of care
- Workplace productivity and absenteeism
- Healthcare utilization



# Overview of PCORI's Cost Data Implementation Proposal

## Pillar 1

- Providing guidance to Principal Investigators in future PFAs on how they should interpret this policy and incorporate it into their research proposals.
- **Timeline:** Final Principles and Guidance for Applicants by **February or March 2021**

## Pillar 2

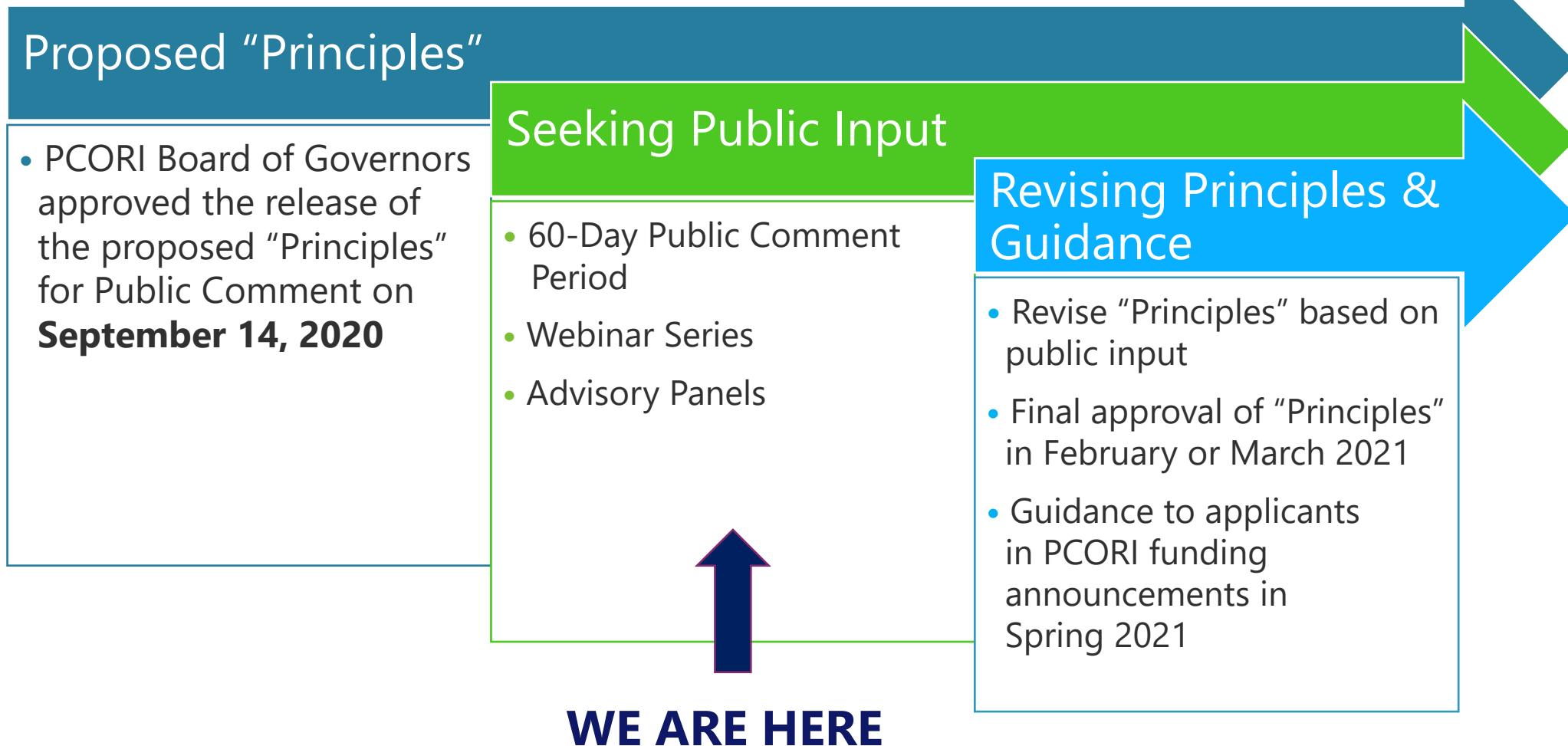
- Establishing methodology standards to further inform how PCORI-funded studies should capture relevant data.
- **Timeline:** Approximately **12 months** from the initiation of this process

## Pillar 3

- Convening discussions on how this information can/should be used.
- **Timeline:** Ongoing Discussion

# Progress Report

## Pillar One





# Proposed Principles for the Consideration of the Full Range of Outcomes Data

## What are the Principles?

- These principles are a **high-level framework** to describe PCORI's interpretation of the new mandate to collect cost burden and economic impact data

## Why do we need them?

- To provide the public and potential applicants with an understanding of how PCORI interprets the mandate

## How will they be used?

- These principles will serve as a point of reference for PCORI as a basis for developing guidance to potential applicants and updating PCORI's Methodology Standards
- These principles should not be viewed as standards and methods

# Proposed Principles

## ***Identifying Outcomes Important to Patients***

- **Principle #1:** PCORI-funded research may consider the full range of outcomes *important to patients and caregivers*, including burdens and economic impacts.

## ***Identifying Outcomes Important to Stakeholders***

- **Principle #2:** PCORI-funded research may consider the full range of outcomes *relevant to other stakeholders*, when these outcomes have a near-term or longer-term impact on patients.

## ***Criteria Regarding the Collection of Data***

- **Principle #3:** The collection of data on burdens and economic impacts of treatment options must be appropriate and relevant to the clinical aims of the study.

## ***Consideration of Economic Analysis***

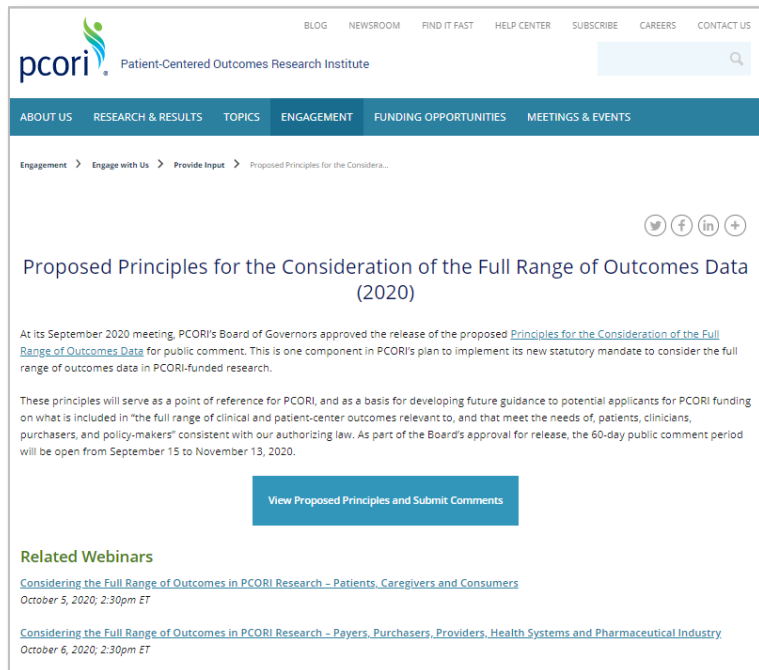
- **Principle #4:** Beyond the collection of burden and economic impact data, PCORI may support the conduct of certain types of economic analyses as part of a funded research study, to enhance the relevance and value of this information to health care decision-makers.

# Themes of Input Received

- Broad **support** for the consideration of costs and economic impact data in PCORI research
- Ensure a **patient-centered and holistic** approach to the consideration of costs
- Consider the cost burdens and impacts from a **societal and community** level
- Helpful to capture **implementation or program costs**
- Having patient-centered cost/impact data can help in **value-based payment** models

# References & Resources

- [Proposed Principles for the Consideration of the Full Range of Outcomes Data \(\*Landing Page\*\)](#)



- [Webinar 1 Recording \(Patients, Caregivers, and Consumers\)](#)

- [Webinar 2 Recording \(Payers, Purchasers, Providers, Health Systems and Pharmaceutical Industry\)](#)

- [Proposed Principles for the Consideration of the Full Range of Outcomes Data \(\*Public Comment Webform\*\)](#)



# Discussion

---

# Engagement Awards Update

---

## Bringing New Organizations to the Table

Karen Martin

Program Director, Eugene Washington PCORI  
Engagement Awards

Alicia Thomas

Associate Director, Eugene Washington PCORI  
Engagement Awards

# Eugene Washington PCORI Engagement Award Program



- Support projects to build a community of patients and other stakeholders equipped to participate as partners in PCOR/CER, as well as serve as channels to disseminate PCORI-funded study results
- Funding to support engagement in, and with, research, not to conduct research





# Engagement Award Funding Opportunities

**\$250,000**  
**Up to 2 years**

## Engagement Award: Capacity Building

Objective: Prepare patients and stakeholders to participate as partners in PCOR/CER and/or develop partnerships and infrastructure to disseminate and implement PCORI-funded research findings

**\$250,000**  
**Up to 2 years**

## Engagement Award: Dissemination Initiative

Objective: Support communities and organizations to actively disseminate PCORI-funded research findings

**\$100,000**  
**Up to 1 year**

## Engagement Award: Stakeholder Convening Support

Objective: Convene stakeholders to explore critical issues related to PCOR/CER and/or communicate PCORI-funded research findings to targeted end-users

# Evolution of Funding Priorities

## 2014-2016

- Knowledge Awards
- Training and Development Awards
- Dissemination & Implementation Awards
- Meetings and Conferences Support

## June 2018- June 2019

- Capacity Building
- Dissemination Initiative
- Conference Support

## May 2020

- Capacity Building
- Dissemination Initiative
- Stakeholder Convening
- COVID-19 Enhancements and Special Cycle

## October 2017- February 2018

- Engagement Award (general)
- Meetings and Conference Support

## November 2019

- Special Project Funding Announcements:
- Community Convening
  - Accelerating the Adoption of Tools and Resources

## October 2020

- Capacity Building
- Dissemination Initiative
- Stakeholder Convening
- *Next Steps: Opportunities for growth under PCORI 2.0*

# Discussion Questions



- What are the needs of smaller organizations (e.g., community-based organizations, patient/caregiver/advocacy organizations, associations, etc.) with regards to building capacity for stakeholder engagement in PCOR/CER?
- How can we promote the Engagement Awards to a wider range of organizations?
- What forums or networks might be interested in learning more about the program?

# Funded Projects on PCORI's Website



## Explore Our Portfolio of Funded Projects

(If you would like more detailed information about research projects PCORI has funded, please contact [info@pcori.org](mailto:info@pcori.org))

Search Projects

☒ Show Only Projects With Results

Filter Results:

Project Status

State

Project Type

More filters

Displaying 1 - 10 of 846

✕ Engagement in Research Project

Reset All Filters

Download these results

| Project Title  | Project Status       | State          | Project Type             |
|--|----------------------|----------------|--------------------------|
| Accelerating Adoption of Research Ready Tools to Engage the Clinical Workforce as Champions of PCOR<br><br>Louisiana Public Health Institute<br>Daniele Farrisi, MPH | Awarded; In progress | Louisiana      | Engagement Award Project |
| Virtual Patient Engagement (VIP) Studio: Using Technology to Engage Hard-to-Reach Patients   | Awarded; In progress | South Carolina | Engagement Award Project |

# Sustaining Engagement During the Pandemic

---

## Sharing Novel Approaches

### **Advisory Panelists:**

Gwen Darien, Jennifer Canvasser, Marilyn Geller, Crispin Goytia-Vasquez

### **PCORI Staff:**

Kate Boyd, Program Officer, Eugene Washington PCORI Engagement Awards

Christine Broderick, Engagement Officer, Public and Patient Engagement

Courtney Clyatt, Senior Program Officer, Eugene Washington PCORI Engagement Awards



# Overview

- The Changing Landscape
  - Some of what we are seeing
- PEAPs in Action: Adapting to the Pandemic
  - Jennifer Canvasser, NEC Society
  - Marilyn Geller, Celiac Disease Foundation
  - Crispin Goytia, Patient Engagement Consultant
- Open Discussion
  - What adjustments are you making to your engagement approaches due to the pandemic?

1.

---

# The Changing Landscape

Kate Boyd

Program Officer, Eugene Washington PCORI Engagement Awards

Christine Broderick

Engagement Officer, Public and Patient Engagement

Courtney Clyatt

Senior Program Officer, Eugene Washington PCORI Engagement Awards



# Some of What we are Seeing

## Contextual Factors

- Health systems focused on direct care
- Research suspended
- Individuals/families health affected; loss of income
- Community and personal trauma

## Engagement Adaptations

- Virtuality, the new normal
- More intense front-end support
- Community organizations are pivoting to respond to immediate personal needs of stakeholder partners
- Use of intermediaries to assess and support engagement

## Opportunities

- Flexible, just-in-time methods that widen participation
- Involvement of stakeholder partners in study adaptation
- Patient-generated data collection

# 2.

---

## PEAPs in Action: Adapting to the Pandemic

Jennifer Canvasser, Founder, NEC Society

Marilyn Geller, Chief Executive Officer, Celiac Disease Foundation

Crispin Goytia-Vasquez, Patient Engagement Consultant



# PEAPs in Action

## Adapting to the Pandemic

- Jennifer Canvasser, NEC Society
- Marilyn Geller, Celiac Disease Foundation
- Crispin Goytia-Vasquez, Patient Engagement Consultant



# Necrotizing Enterocolitis (NEC) Society



## FALL 2020 WEBINAR SERIES

ALL WEBINARS 3 PM EASTERN

SEPTEMBER 30

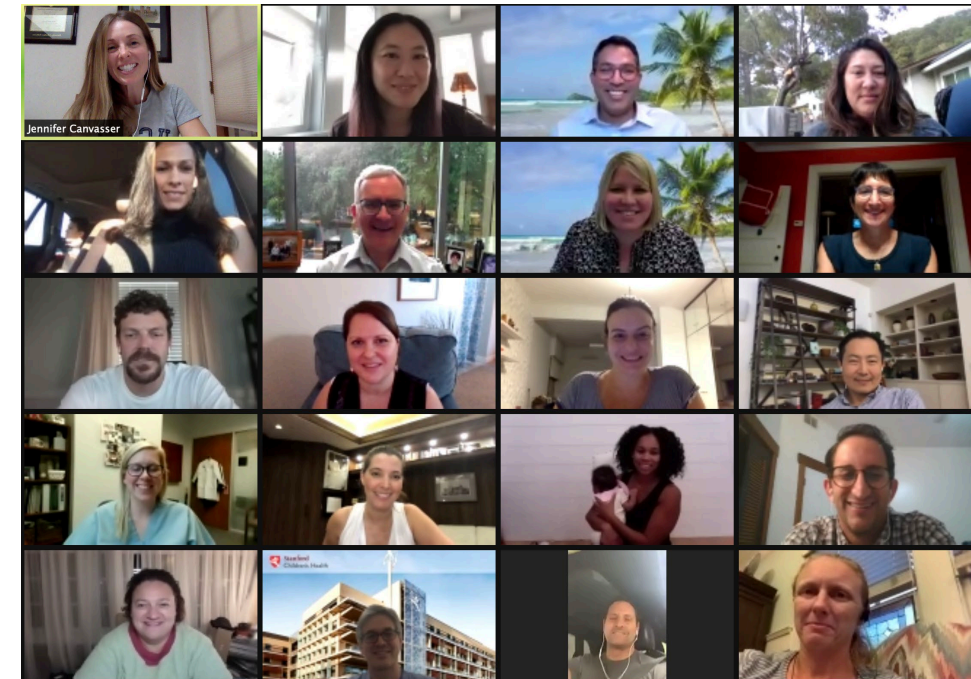
**CARDIAC NEC**

OCTOBER 14

**LONG TERM NEC OUTCOMES**

NOVEMBER 18

**NEST TRIAL**



# Necrotizing Enterocolitis (NEC) Society



[ABOUT US](#) [OUR WORK](#) [OUR IMPACT](#) [CONTACT US](#) [Q](#)

## STEPPING UP IN UNCERTAINTY

*In this time of crisis, we must all pull together and step up to the challenges set before us.  
Our team is here to provide support where you need it most.*

In the spirit of our core value [Step Up](#), we've identified a number of ways below to support all of you amazing leaders and organizations in this strange time. We've pulled together a list of offerings we think might help you as you navigate this crisis. If you were hoping to see something different here, please reach out and let us know how we can help!



# Necrotizing Enterocolitis (NEC) Society



## Insights

[See All](#)

Last 28 days : Sep 17 - Oct 14

People Reached

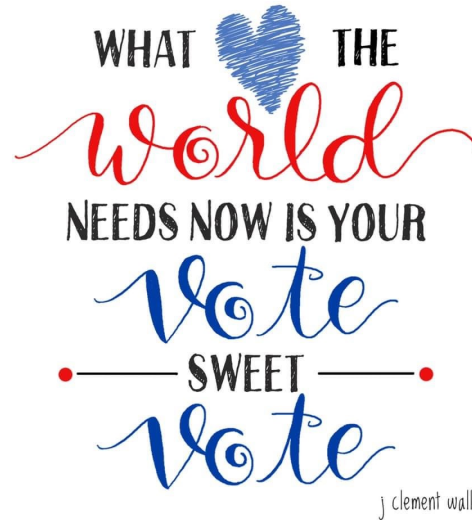
**39,435**  
▲ 20%

Post Engagements

**17,072**  
▲ 43%

Page Likes

**150**  
▲ 15%



## What are the long-term outcomes of NEC?

Learn more about our research project:  
[NECsociety.org](https://NECsociety.org)



#preventNEC

**NEC Society**  
Published by Linleigh Green · Yesterday at 2:39 PM ·

Meet Harrison.

Sweet Harrison tragically passed away from NEC at the age of five weeks. His family did not know he had the disease until after the fact.

Harrison's family would like everyone to know necrotizing enterocolitis can act rapidly and impact preemies and fragile full-term babies. Educating yourself on the symptoms of the disease is important.

Join us as we build a more just, equitable world without necrotizing enterocolitis: [NECsociety.org](https://NECsociety.org) #preventNEC #RareAsOne #aworldwithoutNEC



2,863  
People Reached

632  
Engagements

[Boost Post](#)

94

11 Comments 10 Shares

Like

Comment

Share

## Fundraisers

[See All](#)

**Kristen's Birthday Fundraiser for NEC Society**

Fundraiser for NEC Society by  
Kristen Tallon

\$190 raised of \$200

You wrote thank you. [See Post](#)



**Kaitlyn's Birthday Fundraiser for NEC Society**

Fundraiser for NEC Society by  
Kaitlyn Outland

\$300 raised of \$300

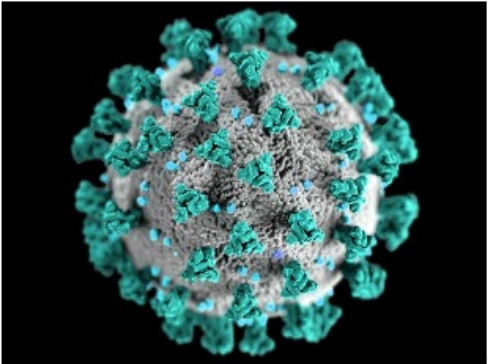
[Say Thanks](#)



# Celiac Disease Foundation

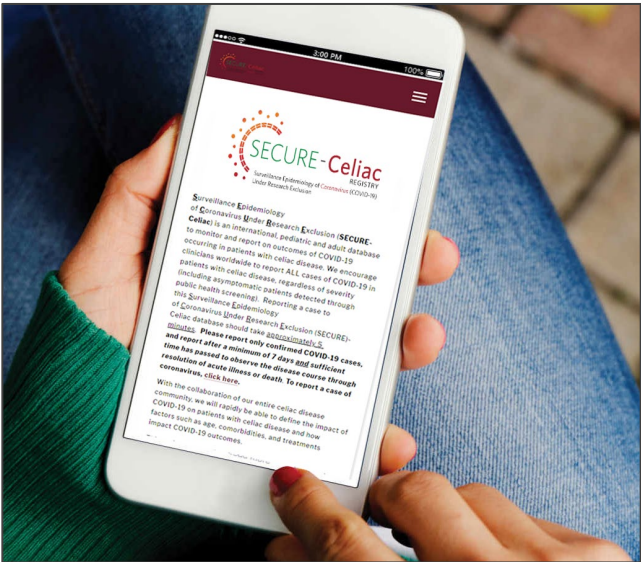


Leading the fight to increase the rate of diagnosis, to improve treatment, and to find a cure for celiac disease.



### Celiac Disease and COVID-19

Coronavirus (COVID-19) is a new virus that can affect the lungs and airways. There is no research specifically looking at the risk to people with celiac disease. Our experts recommend that you keep current with your vaccines, maintain a strict, gluten-free diet, and protect your mental health.



#CeliacUnited



Stronger together in the face of crisis.

Celiac disease patients unite in solidarity around the world.

Join iAdvocate

Complete the State Advocacy Ambassador training program

Celiac Disease and Coronavirus (COVID-19) Resource Center

# Lessons Learned for Virtual Engagement

- ▶ We had to “pivot” engagement with our stakeholders across projects
  - ▶ In our Patient Dashboard Project, focus groups moved from in-person to completely virtual (Zoom, Webex, Microsoft teams)
- ▶ Recognizing stakeholders are juggling competing priorities
  - ▶ Jumping from meeting to meeting, overlapping meeting times, “zoom fatigue”
  - ▶ Deciding what projects are worth your time and energy
  - ▶ How to fit in with your family obligations
- ▶ Understanding gaps and adapting virtual technologies
  - ▶ Learned about gaps in how people use technology to connect with others (professionally & personally)
  - ▶ As a result, we created a step-by-step guide on how to use zoom that were provided to stakeholders in advance of virtual personal interviews
- ▶ Check-ins (still important!)
  - ▶ Don't forget to have regular check-ins with your patient partners & stakeholders to make sure they are **NOT** left out or feeling left behind!

## How to Join a Zoom Meeting

Before joining a Zoom meeting on a computer or smartphone device, you can download the Zoom app from the Zoom Download Center. Otherwise, you will be prompted to download and install Zoom when you click a join link. You can also join by phone and all instructions are below:

## What you need to know about Zoom Meeting

Each meeting has a unique 9, 10, or 11-digit number called a **meeting ID** that will be required to **join** a Zoom meeting. If you are joining by telephone, you will need the teleconferencing number that should have been provided in the invite.

## WHITE PAPER

# Expanded Role of Patient Engagement in Clinical Research During the COVID-19 Pandemic



DENIS CURTIN, PHD

<https://www.signanthealth.com/wp-content/uploads/2020/05/COVID-19-Patient-Engagement-Curtin.pdf>

Signant Health

Engagement-Curtin.pdf

**3.**

---

## Panel Discussion



# What's Happening in your Communities?



## Discussion Questions

- How are you changing your engagement approaches as a result of the pandemic, beyond moving to virtual?
- Is anything working better now that it did before? Have there been unanticipated gains from changes that you've made?
- What's been the downside? What's getting lost?

# Adjourn

